

MPG Rabbit pAb

Catalog No.: A5410

Basic Information

Observed MW
37kDa

Calculated MW
33kDa

Category
Primary antibody

Applications
ELISA, WB, IF/ICC

Cross-Reactivity
Human, Mouse

Background

Predicted to enable alkylbase DNA N-glycosylase activity. Predicted to be involved in base-excision repair. Located in cytosol and nucleoplasm.

Recommended Dilutions

WB	1:500 - 1:2000
IF/ICC	1:50 - 1:100

Immunogen Information

Gene ID	Swiss Prot
4350	P29372

Immunogen
Recombinant fusion protein containing a sequence corresponding to amino acids 1-293 of human MPG (NP_001015052.1).

Synonyms
AAG; MDG; ADPG; APNG; Mid1; anpg; PIG11; PIG16; CRA36.1; MPG

Contact

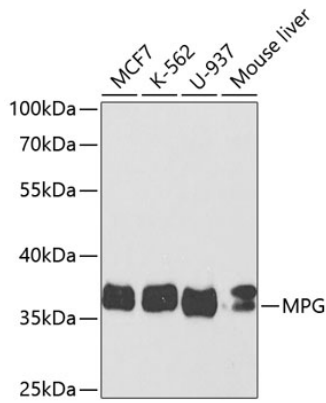
 | www.abclonal.com

Product Information

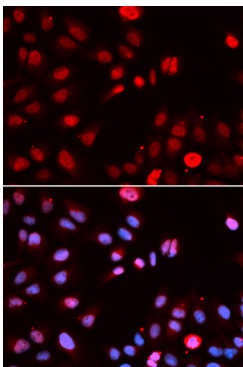
Source	Isotype	Purification
Rabbit	IgG	Affinity purification

Storage
Store at -20°C. Avoid freeze / thaw cycles.
Buffer: PBS with 0.02% sodium azide, 50% glycerol, pH7.3.

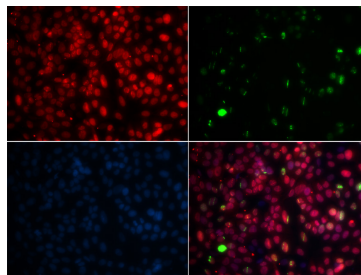
Validation Data



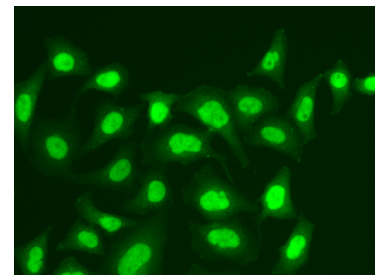
Western blot analysis of extracts of various cell lines, using MPG antibody (A5410) at 1:1000 dilution. Secondary antibody: HRP Goat Anti-Rabbit IgG (H+L) (A5014) at 1:10000 dilution. Lysates/proteins: 25µg per lane. Blocking buffer: 3% nonfat dry milk in TBST. Detection: ECL Enhanced Kit (RM00021). Exposure time: 40s.



Immunofluorescence analysis of U2OS cells using MPG antibody (A5410). Blue: DAPI for nuclear staining.



Immunofluorescence analysis of GFP-RNF168 transgenic U2OS cells using MPG antibody (A5410). Green: GFP-RNF168 fusion protein expression for DNA damage marker. Blue: DAPI for nuclear staining. RNF168 (GFP) can be used to mark cells damaged by UV-A laser for they always gather around DNA damage region.



Immunofluorescence analysis of A549 cells using MPG antibody (A5410).