

A5386

Leader in Biomolecular Solutions for Life Science



WIF1 Rabbit pAb

Catalog No.: A5386

Basic Information

Observed MW

42kDa

Calculated MW

42kDa

Category

Polyclonal Antibody

Applications

WB,IF/ICC,ELISA

Cross-Reactivity

Human,Mouse,Rat

Background

The protein encoded by this gene functions to inhibit WNT proteins, which are extracellular signaling molecules that play a role in embryonic development. This protein contains a WNT inhibitory factor (WIF) domain and five epidermal growth factor (EGF)-like domains, and is thought to be involved in mesoderm segmentation. This gene functions as a tumor suppressor gene, and has been found to be epigenetically silenced in various cancers.

Recommended Dilutions

WB 1:100 - 1:500

IF/ICC 1:50 - 1:200

Immunogen Information

Gene ID

11197

Swiss Prot

Q9Y5W5

Immunogen

Recombinant fusion protein containing a sequence corresponding to amino acids 307-377 of human WIF1 (NP_009122.2).

Synonyms

WIF-1; WIF1

Contact



www.abclonal.com

Product Information

Source

Rabbit

Isotype

IgG

Purification

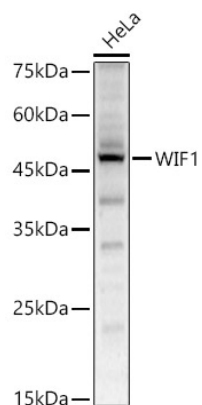
Affinity purification

Storage

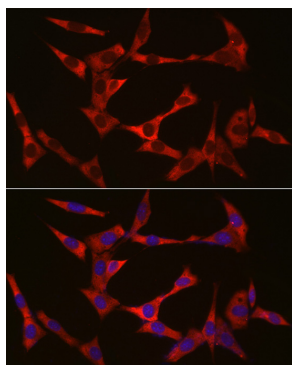
Store at -20°C. Avoid freeze / thaw cycles.

Buffer: PBS with 0.05% proclin300,50% glycerol,pH7.3.

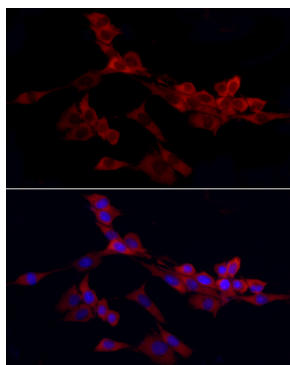
Validation Data



Western blot analysis of HeLa, using WIF1 antibody (A5386) at 1:500 dilution.
Secondary antibody: HRP Goat Anti-Rabbit IgG (H+L) (AS014) at 1:10000 dilution.
Lysates/proteins: 25µg per lane.
Blocking buffer: 3% nonfat dry milk in TBST.
Detection: ECL Enhanced Kit (RM00021).
Exposure time: 60s.



Immunofluorescence analysis of NIH/3T3 cells using WIF1 Rabbit pAb (A5386) at dilution of 1:50 (40x lens).
Blue: DAPI for nuclear staining.



Immunofluorescence analysis of PC-12 cells using WIF1 Rabbit pAb (A5386) at dilution of 1:50 (40x lens).
Blue: DAPI for nuclear staining.