

# CPT1A Rabbit pAb

Catalog No.: A5307 **15 Publications**

## Basic Information

### Catalog No.

A5307

### Observed MW

88kDa

### Calculated MW

86kDa/88kDa

### Category

Primary antibody

### Applications

WB, IP


### Cross-Reactivity

Human, Mouse, Rat

## Recommended Dilutions

<b>WB</b>	1:500 - 1:2000
<b>IP</b>	1:50 - 1:100

## Contact

 | [www.abclonal.com](http://www.abclonal.com)

## Background

The mitochondrial oxidation of long-chain fatty acids is initiated by the sequential action of carnitine palmitoyltransferase I (which is located in the outer membrane and is detergent-labile) and carnitine palmitoyltransferase II (which is located in the inner membrane and is detergent-stable), together with a carnitine-acylcarnitine translocase. CPT I is the key enzyme in the carnitine-dependent transport across the mitochondrial inner membrane and its deficiency results in a decreased rate of fatty acid beta-oxidation. Alternatively spliced transcript variants encoding different isoforms have been found for this gene.

## Immunogen Information

<b>Gene ID</b>	<b>Swiss Prot</b>
1374	P50416

### Immunogen

Recombinant fusion protein containing a sequence corresponding to amino acids 497-756 of human CPT1A (NP\_001027017.1).

### Synonyms

CPT1A;CPT1;CPT1-L;L-CPT1

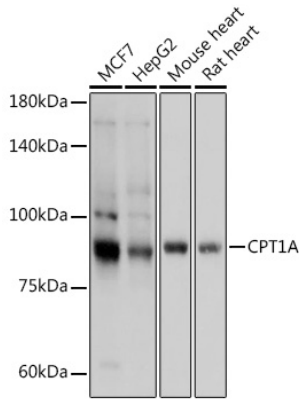
## Product Information

<b>Source</b>	<b>Isotype</b>	<b>Purification</b>
Rabbit	IgG	Affinity purification

### Storage

Store at -20°C. Avoid freeze / thaw cycles.  
Buffer: PBS with 0.02% sodium azide,50% glycerol,pH7.3.

## Validation Data



Western blot analysis of extracts of various cell lines, using CPT1A antibody (A5307) at 1:1000 dilution.

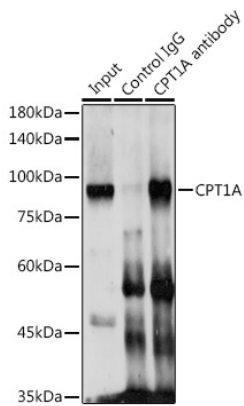
Secondary antibody: HRP Goat Anti-Rabbit IgG (H+L) (A5014) at 1:10000 dilution.

Lysates/proteins: 25ug per lane.

Blocking buffer: 3% nonfat dry milk in TBST.

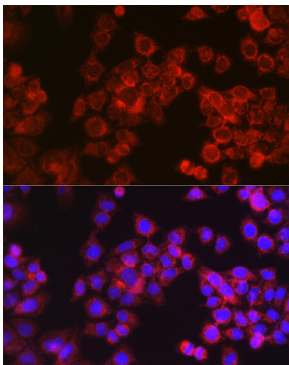
Detection: ECL Basic Kit (RM00020).

Exposure time: 1s.



Immunoprecipitation analysis of 300ug extracts of MCF7 cells using 3ug CPT1A antibody (A5307).

Western blot was performed from the immunoprecipitate using CPT1A antibody (A5307) at a dilution of 1:1000.



Immunofluorescence analysis of HeLa cells using CPT1A Rabbit pAb (A5307) at dilution of 1:150 (40x lens). Blue: DAPI for nuclear staining.