

TLR4 Rabbit pAb

Catalog No.: A5258 **20 Publications**

Basic Information

Catalog No.

A5258

Observed MW

96KDa

Calculated MW

73kDa/91kDa/95kDa

Category

Primary antibody

Applications

WB, IHC, IF

Cross-Reactivity

Human, Mouse, Rat

Recommended Dilutions

WB	1:500 - 1:2000
IHC	1:100 - 1:200
IF	1:50 - 1:200

Contact

 | www.abclonal.com

Background

The protein encoded by this gene is a member of the Toll-like receptor (TLR) family which plays a fundamental role in pathogen recognition and activation of innate immunity. TLRs are highly conserved from *Drosophila* to humans and share structural and functional similarities. They recognize pathogen-associated molecular patterns that are expressed on infectious agents, and mediate the production of cytokines necessary for the development of effective immunity. The various TLRs exhibit different patterns of expression. This receptor has been implicated in signal transduction events induced by lipopolysaccharide (LPS) found in most gram-negative bacteria. Mutations in this gene have been associated with differences in LPS responsiveness. Multiple transcript variants encoding different isoforms have been found for this gene.

Immunogen Information

Gene ID	Swiss Prot
7099	O00206

Immunogen

A synthetic peptide corresponding to a sequence within amino acids 500-600 of human TLR4 (NP_612564.1).

Synonyms

TLR4;ARMD10;CD284;TLR-4;TOLL

Product Information

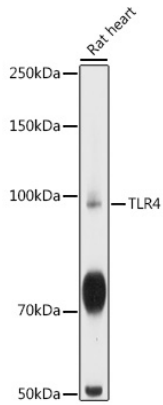
Source	Isotype	Purification
Rabbit	IgG	Affinity purification

Storage

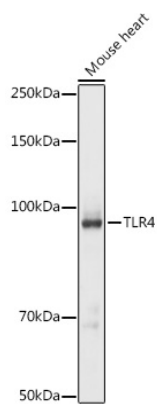
Store at -20°C. Avoid freeze / thaw cycles.

Buffer: PBS with 0.02% sodium azide, 50% glycerol, pH7.3.

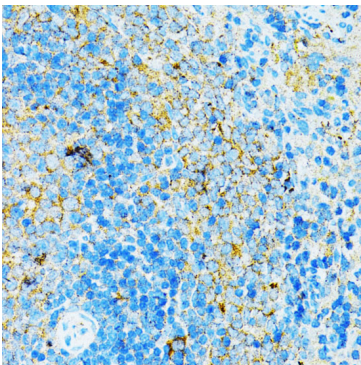
Validation Data



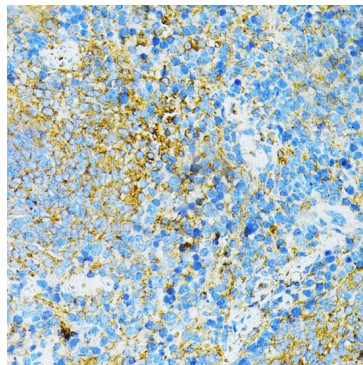
Western blot analysis of extracts of Rat heart, using TLR4 antibody (A5258) at 1:1000 dilution.
Secondary antibody: HRP Goat Anti-Rabbit IgG (H+L) (AS014) at 1:10000 dilution.
Lysates/proteins: 25ug per lane.
Blocking buffer: 3% nonfat dry milk in TBST.
Detection: ECL Basic Kit (RM00020).
Exposure time: 10s.



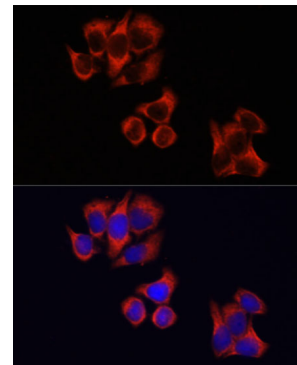
Western blot analysis of extracts of Mouse heart, using TLR4 antibody (A5258) at 1:1000 dilution.
Secondary antibody: HRP Goat Anti-Rabbit IgG (H+L) (AS014) at 1:10000 dilution.
Lysates/proteins: 25ug per lane.
Blocking buffer: 3% nonfat dry milk in TBST.
Detection: ECL Basic Kit (RM00020).
Exposure time: 90s.



Immunohistochemistry of paraffin-embedded rat spleen using TLR4 antibody (A5258) at dilution of 1:100 (40x lens).



Immunohistochemistry of paraffin-embedded mouse spleen using TLR4 antibody (A5258) at dilution of 1:100 (40x lens).



Immunofluorescence analysis of HeLa cells using TLR4 antibody (A5258) at dilution of 1:100. Blue: DAPI for nuclear staining.