

A5205

Leader in Biomolecular Solutions for Life Science



ADGRF5 Rabbit pAb

Catalog No.: A5205

Basic Information

Observed MW

180kDa

Calculated MW

149kDa

Category

Polyclonal Antibody

Applications

WB,ELISA

Cross-Reactivity

Mouse,Rat

Background

Predicted to enable G protein-coupled receptor activity. Predicted to be involved in G protein-coupled receptor signaling pathway and cell surface receptor signaling pathway. Predicted to act upstream of or within several processes, including glomerular filtration; pharyngeal arch artery morphogenesis; and surfactant homeostasis. Located in cell surface and cytoplasmic vesicle.

Recommended Dilutions

WB 1:500 - 1:2000

Immunogen Information

Gene ID

221395

Swiss Prot

Q8IZF2

Immunogen

Recombinant fusion protein containing a sequence corresponding to amino acids 22-280 of human ADGRF5 (NP_056049.4).

Synonyms

GPR116; KPG_001; ADGRF5

Contact



www.abclonal.com

Product Information

Source

Rabbit

Isotype

IgG

Purification

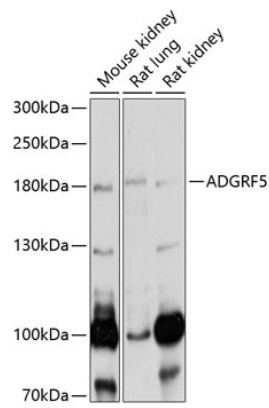
Affinity purification

Storage

Store at -20°C. Avoid freeze / thaw cycles.

Buffer: PBS with 0.02% sodium azide,50% glycerol,pH7.3.

Validation Data



Western blot analysis of extracts of various cell lines, using ADGRF5 antibody (A5205) at 1:1000 dilution.
Secondary antibody: HRP Goat Anti-Rabbit IgG (H+L) (AS014) at 1:10000 dilution.
Lysates/proteins: 25µg per lane.
Blocking buffer: 3% nonfat dry milk in TBST.
Detection: ECL Basic Kit (RM00020).
Exposure time: 5s.