

ASB17 Rabbit pAb

Catalog No.: A5136

Basic Information

Observed MW

36kDa

Calculated MW

34kDa

Category

Primary antibody

Applications

WB

Cross-Reactivity

Human, Mouse

Background

Predicted to be involved in intracellular signal transduction and protein ubiquitination.
Predicted to be located in cytosol.

Recommended Dilutions

WB 1:500 - 1:1000

Immunogen Information

Gene ID

127247

Swiss Prot

Q8WXJ9

Immunogen

A synthetic Peptide of human ASB17

Synonyms

Asb-17; ASB17

Contact

 | www.abclonal.com

Product Information

Source

Rabbit

Isotype

IgG

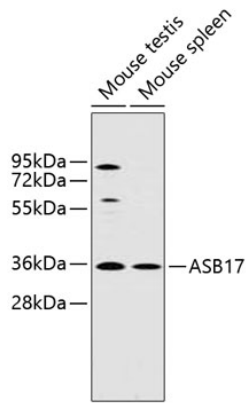
Purification

Affinity purification

Storage

Store at 4°C. Avoid freeze / thaw cycles.
Buffer: PBS with 0.02% sodium azide, pH7.3.

Validation Data



Western blot analysis of extracts of various cell lines, using ASB17 antibody (A5136) at 1:1000 dilution.

Secondary antibody: HRP Goat Anti-Rabbit IgG (H+L) (AS014) at 1:10000 dilution.

Lysates/proteins: 25µg per lane.

Blocking buffer: 3% nonfat dry milk in TBST.