

A4943

Leader in Biomolecular Solutions for Life Science



Clathrin heavy chain Rabbit mAb

Catalog No.: A4943 **Recombinant** **2 Publications**

Basic Information

Observed MW

192kDa

Calculated MW

191kDa

Category

SMab Recombinant Monoclonal Antibody

Applications

WB,IHC-P,IF/ICC,IP,ELISA

Cross-Reactivity

Human,Mouse,Rat

CloneNo number

ARC1228

Background

Clathrin is a major protein component of the cytoplasmic face of intracellular organelles, called coated vesicles and coated pits. These specialized organelles are involved in the intracellular trafficking of receptors and endocytosis of a variety of macromolecules. The basic subunit of the clathrin coat is composed of three heavy chains and three light chains.

Recommended Dilutions

WB	1:500 - 1:2000
IHC-P	1:50 - 1:200
IF/ICC	1:50 - 1:200
IP	0.5µg-4µg antibody for 200µg-400µg extracts of whole cells

Immunogen Information

Gene ID

1213

Swiss Prot

Q00610/P53675

Immunogen

A synthetic peptide corresponding to a sequence within amino acids 200-300 of human Clathrin heavy chain (Q00610).

Synonyms

Hc; CHC; CHC17; MRD56; CLH-17; CLTCL2; Clathrin heavy chain

Contact



www.abclonal.com

Product Information

Source

Rabbit

Isotype

IgG

Purification

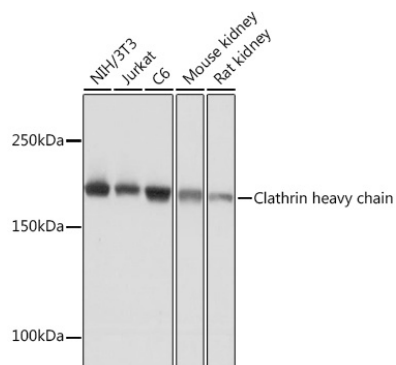
Affinity purification

Storage

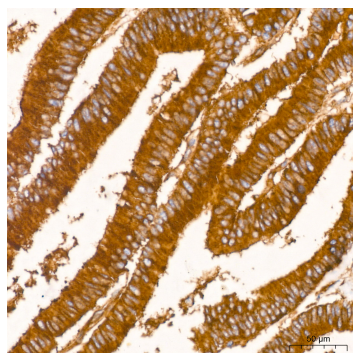
Store at -20°C. Avoid freeze / thaw cycles.

Buffer: PBS with 0.02% sodium azide,0.05% BSA,50% glycerol,pH7.3.

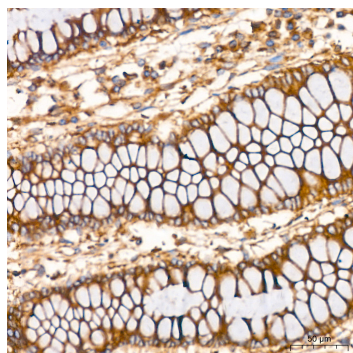
Validation Data



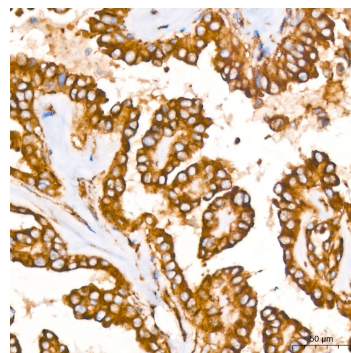
Western blot analysis of various lysates using Clathrin heavy chain Rabbit mAb (A4943) at 1:1000 dilution. Secondary antibody: HRP Goat Anti-Rabbit IgG (H+L) (AS014) at 1:10000 dilution. Lysates/proteins: 25µg per lane. Blocking buffer: 3% nonfat dry milk in TBST. Detection: ECL Basic Kit (RM00020). Exposure time: 10s.



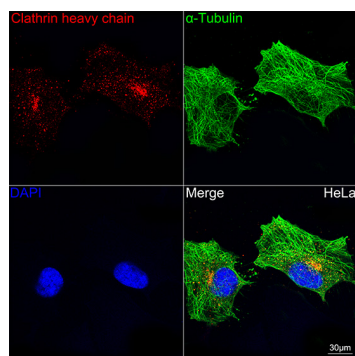
Immunohistochemistry analysis of Clathrin heavy chain in paraffin-embedded human colon carcinoma tissue using Clathrin heavy chain Rabbit mAb (A4943) at a dilution of 1:200 (40x lens). High pressure antigen retrieval was performed with 0.01 M Tris-EDTA buffer (pH 9.0) prior to IHC staining.



Immunohistochemistry analysis of Clathrin heavy chain in paraffin-embedded human colon tissue using Clathrin heavy chain Rabbit mAb (A4943) at a dilution of 1:200 (40x lens). High pressure antigen retrieval was performed with 0.01 M Tris-EDTA buffer (pH 9.0) prior to IHC staining.

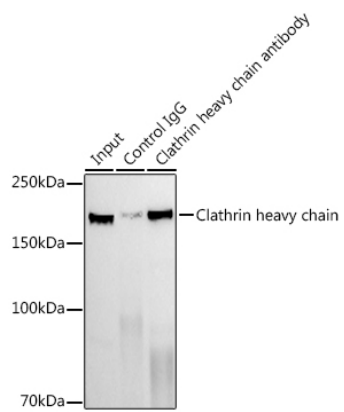


Immunohistochemistry analysis of Clathrin heavy chain in paraffin-embedded human thyroid cancer tissue using Clathrin heavy chain Rabbit mAb (A4943) at a dilution of 1:200 (40x lens). High pressure antigen retrieval was performed with 0.01 M Tris-EDTA buffer (pH 9.0) prior to IHC staining.



Confocal imaging of HeLa cells using Clathrin heavy chain Rabbit mAb (A4943, dilution 1:100) (Red). The cells were counterstained with α -Tubulin Rabbit mAb (AC049, dilution 1:100) (Green). DAPI was used for nuclear staining (blue). Objective: 60x.

Validation Data



Immunoprecipitation analysis of 300 μ g extracts of NIH/3T3 cells using 3 μ g Clathrin heavy chain antibody (A4943). Western blot was performed from the immunoprecipitate using Clathrin heavy chain antibody (A4943) at a dilution of 1:1000.