

A4933

Leader in Biomolecular Solutions for Life Science



# 14-3-3 epsilon Rabbit mAb

Catalog No.: A4933 **Recombinant** **1 Publications**

## Basic Information

### Observed MW

28kDa

### Calculated MW

29kDa

### Category

SMab Recombinant Monoclonal Antibody

### Applications

WB,ELISA

### Cross-Reactivity

Human,Mouse,Rat

### CloneNo number

ARC1222

## Background

This gene product belongs to the 14-3-3 family of proteins which mediate signal transduction by binding to phosphoserine-containing proteins. This highly conserved protein family is found in both plants and mammals, and this protein is 100% identical to the mouse ortholog. It interacts with CDC25 phosphatases, RAF1 and IRS1 proteins, suggesting its role in diverse biochemical activities related to signal transduction, such as cell division and regulation of insulin sensitivity. It has also been implicated in the pathogenesis of small cell lung cancer. Two transcript variants, one protein-coding and the other non-protein-coding, have been found for this gene.

## Recommended Dilutions

WB 1:500 - 1:1000

## Immunogen Information

### Gene ID

7531

### Swiss Prot

P62258

### Immunogen

A synthetic peptide corresponding to a sequence within amino acids 1-100 of human 14-3-3 epsilon (P62258).

### Synonyms

MDS; HEL2; MDCR; KCIP-1; 14-3-3E; 14-3-3 epsilon

## Contact



[www.abclonal.com](http://www.abclonal.com)

## Product Information

### Source

Rabbit

### Isotype

IgG

### Purification

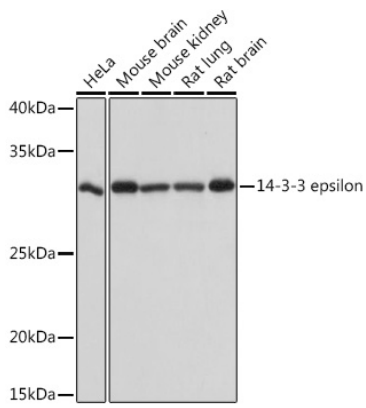
Affinity purification

### Storage

Store at -20°C. Avoid freeze / thaw cycles.

Buffer: PBS with 0.02% sodium azide,0.05% BSA,50% glycerol,pH7.3.

## Validation Data



Western blot analysis of extracts of various cell lines, using 14-3-3 epsilon Rabbit mAb (A4933) at 1:1000 dilution.

Secondary antibody: HRP Goat Anti-Rabbit IgG (H+L) (AS014) at 1:10000 dilution.

Lysates/proteins: 25µg per lane.

Blocking buffer: 3% nonfat dry milk in TBST.

Detection: ECL Basic Kit (RM00020).

Exposure time: 1s.