

POLR1E Rabbit pAb

Catalog No.: A4930

Basic Information

Observed MW

54kDa

Calculated MW

47kDa

Category

Primary antibody

Applications

WB

Cross-Reactivity

Human

Background

Predicted to enable DNA binding activity; DNA-directed 5'-3' RNA polymerase activity; and RNA polymerase I general transcription initiation factor binding activity. Involved in nucleolar large rRNA transcription by RNA polymerase I. Located in fibrillar center and nucleoplasm.

Recommended Dilutions

WB 1:500 - 1:1000

Immunogen Information

Gene ID

64425

Swiss Prot

Q9GZS1

Immunogen

A synthetic Peptide of human POLR1E

Synonyms

A49; PAF53; PRAF1; RPA49; POLR1E

Contact

 | www.abclonal.com

Product Information

Source

Rabbit

Isotype

IgG

Purification

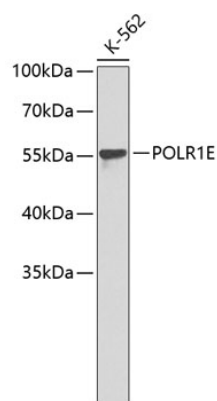
Affinity purification

Storage

Store at 4°C. Avoid freeze / thaw cycles.

Buffer: PBS with 0.02% sodium azide, pH7.3.

Validation Data



Western blot analysis of extracts of K-562 cells, using POLR1E antibody (A4930).
Secondary antibody: HRP Goat Anti-Rabbit IgG (H+L) (A5014) at 1:10000 dilution.
Lysates/proteins: 25µg per lane.
Blocking buffer: 3% nonfat dry milk in TBST.