

MS4A6A Rabbit pAb

Catalog No.: A4926

Basic Information

Observed MW

32kDa

Calculated MW

27kDa

Category

Primary antibody

Applications

WB

Cross-Reactivity

Human

Background

This gene encodes a member of the membrane-spanning 4A gene family. Members of this nascent protein family are characterized by common structural features and similar intron/exon splice boundaries and display unique expression patterns among hematopoietic cells and nonlymphoid tissues. The gene encoding this protein is localized to 11q12.1, among a cluster of family members. Alternative splicing of this gene results in several transcript variants that encode different protein isoforms.

Recommended Dilutions

WB 1:500 - 1:1000

Immunogen Information

Gene ID

64231

Swiss Prot

Q9H2W1

Immunogen

A synthetic Peptide of human MS4A6A

Synonyms

CDA01; MS4A6; 4SPAN3; CD20L3; MST090; MSTP090; 4SPAN3.2; MS4A6A

Contact

 | www.abclonal.com

Product Information

Source

Rabbit

Isotype

IgG

Purification

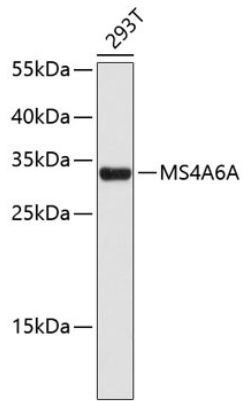
Affinity purification

Storage

Store at 4°C. Avoid freeze / thaw cycles.

Buffer: PBS with 0.02% sodium azide, pH7.3.

Validation Data



Western blot analysis of extracts of 293T cells, using MS4A6A antibody (A4926).
Secondary antibody: HRP Goat Anti-Rabbit IgG (H+L) (AS014) at 1:10000 dilution.
Lysates/proteins: 25µg per lane.
Blocking buffer: 3% nonfat dry milk in TBST.