

NAPB Rabbit pAb

Catalog No.: A4913

Basic Information

Observed MW

36kDa

Calculated MW

34kDa

Category

Primary antibody

Applications

WB

Cross-Reactivity

Human

Background

This gene encodes a member of the soluble N-ethyl-maleimide-sensitive fusion attachment protein (SNAP) family. SNAP proteins play a critical role in the docking and fusion of vesicles to target membranes as part of the 20S NSF-SNAP-SNARE complex. This gene encodes the SNAP beta isoform which has been shown to be preferentially expressed in brain tissue. The encoded protein also interacts with the GluR2 α-amino-3-hydroxy-5-methyl-4-isoxazolepropionate (AMPA) receptor subunit C-terminus and may play a role as a chaperone in the molecular processing of the AMPA receptor.

Recommended Dilutions

WB 1:500 - 1:1000

Immunogen Information

Gene ID

63908

Swiss Prot

Q9H115

Immunogen

A synthetic Peptide of human NAPB

Synonyms

SNAPB; DEE107; SNAP-BETA; NAPB

Contact

 | www.abclonal.com

Product Information

Source

Rabbit

Isotype

IgG

Purification

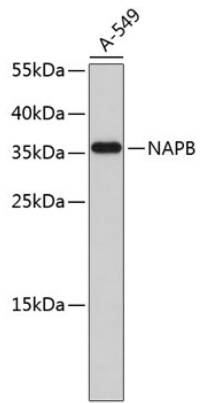
Affinity purification

Storage

Store at 4°C. Avoid freeze / thaw cycles.

Buffer: PBS with 0.02% sodium azide,pH7.3.

Validation Data



Western blot analysis of extracts of A-549 cells, using NAPB antibody (A4913).
Secondary antibody: HRP Goat Anti-Rabbit IgG (H+L) (AS014) at 1:10000 dilution.
Lysates/proteins: 25µg per lane.
Blocking buffer: 3% nonfat dry milk in TBST.