

A4912

Leader in Biomolecular Solutions for Life Science



Cytochrome C Rabbit mAb

Catalog No.: A4912 **Recombinant** **23 Publications**

Basic Information

Observed MW

14kDa

Calculated MW

12kDa

Category

SMab Recombinant Monoclonal Antibody

Applications

WB,IHC-P,ELISA

Cross-Reactivity

Human,Mouse,Rat

CloneNo number

ARC1153

Background

This gene encodes a small heme protein that functions as a central component of the electron transport chain in mitochondria. The encoded protein associates with the inner membrane of the mitochondrion where it accepts electrons from cytochrome b and transfers them to the cytochrome oxidase complex. This protein is also involved in initiation of apoptosis. Mutations in this gene are associated with autosomal dominant nonsyndromic thrombocytopenia. Numerous processed pseudogenes of this gene are found throughout the human genome.

Recommended Dilutions

| | |
|--------------|----------------|
| WB | 1:500 - 1:1000 |
| IHC-P | 1:50 - 1:200 |

Immunogen Information

Gene ID

54205

Swiss Prot

P99999

Immunogen

A synthetic peptide corresponding to a sequence within amino acids 1-105 of human Cytochrome C (P99999).

Synonyms

CYC; HCS; THC4; C

Contact



www.abclonal.com

Product Information

Source

Rabbit

Isotype

IgG

Purification

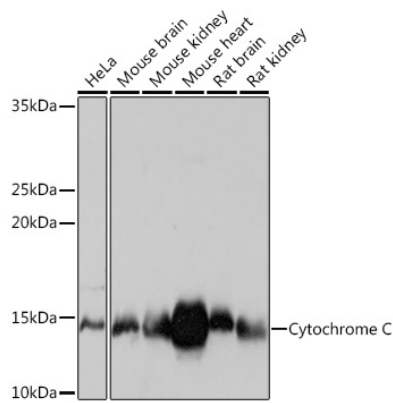
Affinity purification

Storage

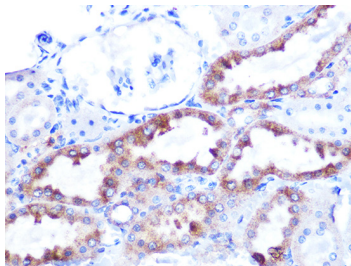
Store at -20°C. Avoid freeze / thaw cycles.

Buffer: PBS with 0.02% sodium azide,0.05% BSA,50% glycerol,pH7.3.

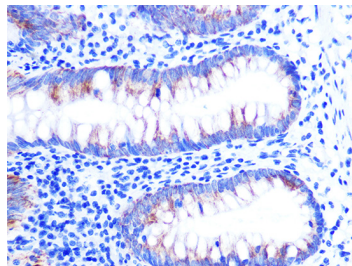
Validation Data



Western blot analysis of various lysates using Cytochrome C Rabbit mAb (A4912) at 1:1000 dilution. Secondary antibody: HRP Goat Anti-Rabbit IgG (H+L) (AS014) at 1:10000 dilution. Lysates/proteins: 25µg per lane. Blocking buffer: 3% nonfat dry milk in TBST. Detection: ECL Basic Kit (RM00020). Exposure time: 10s.



Immunohistochemistry analysis of Cytochrome C in paraffin-embedded rat kidney using Cytochrome C Rabbit mAb (A4912) at dilution of 1:100 (40x lens). Perform microwave antigen retrieval with 10 mM PBS buffer pH 7.2 before commencing with IHC staining protocol.



Immunohistochemistry analysis of Cytochrome C in paraffin-embedded human appendix using Cytochrome C Rabbit mAb (A4912) at dilution of 1:100 (40x lens). Perform microwave antigen retrieval with 10 mM PBS buffer pH 7.2 before commencing with IHC staining protocol.