

RIC8A Rabbit pAb

Catalog No.: A4910

Basic Information

Observed MW

60kDa

Calculated MW

60kDa

Category

Primary antibody

Applications

WB

Cross-Reactivity

Human

Background

Predicted to enable G-protein alpha-subunit binding activity; GTPase activator activity; and guanyl-nucleotide exchange factor activity. Predicted to be involved in G protein-coupled receptor signaling pathway. Predicted to act upstream of or within several processes, including basement membrane organization; gastrulation; and visual learning. Predicted to be located in membrane. Predicted to be active in cytoplasm and plasma membrane.

Recommended Dilutions

WB 1:500 - 1:1000

Immunogen Information

Gene ID

60626

Swiss Prot

Q9NPQ8

Immunogen

A synthetic Peptide of human RIC8A

Synonyms

RIC8; RIC8A

Contact

 | www.abclonal.com

Product Information

Source

Rabbit

Isotype

IgG

Purification

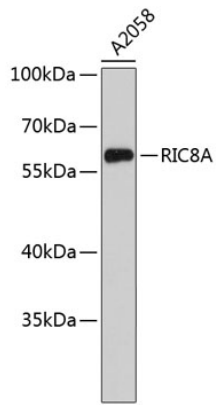
Affinity purification

Storage

Store at 4°C. Avoid freeze / thaw cycles.

Buffer: PBS with 0.02% sodium azide, pH7.3.

Validation Data



Western blot analysis of extracts of A2058 cells, using RIC8A antibody (A4910).
Secondary antibody: HRP Goat Anti-Rabbit IgG (H+L) (AS014) at 1:10000 dilution.
Lysates/proteins: 25µg per lane.
Blocking buffer: 3% nonfat dry milk in TBST.