

A4907

Leader in Biomolecular Solutions for Life Science



# Creatine kinase B type (CKB) Rabbit mAb

Catalog No.: A4907 **Recombinant**

## Basic Information

### Observed MW

43kDa

### Calculated MW

43kDa

### Category

SMab Recombinant Monoclonal Antibody

### Applications

WB,IHC-P,ELISA

### Cross-Reactivity

Human,Mouse,Rat

### CloneNo number

ARC1990

## Background

The protein encoded by this gene is a cytoplasmic enzyme involved in energy homeostasis. The encoded protein reversibly catalyzes the transfer of phosphate between ATP and various phosphogens such as creatine phosphate. It acts as a homodimer in brain as well as in other tissues, and as a heterodimer with a similar muscle isozyme in heart. The encoded protein is a member of the ATP:guanido phosphotransferase protein family. A pseudogene of this gene has been characterized.

## Recommended Dilutions

WB	1:500 - 1:1000
IHC-P	1:50 - 1:200

## Immunogen Information

### Gene ID

1152

### Swiss Prot

P12277

### Immunogen

A synthetic peptide corresponding to a sequence within amino acids 1-100 of human Creatine kinase B type (CKB) (NP\_001814.2).

### Synonyms

BCK; B-CK; CKBB; CPK-B; HEL-211; HEL-S-29; Creatine kinase B type (CKB)

## Contact



[www.abclonal.com](http://www.abclonal.com)

## Product Information

### Source

Rabbit

### Isotype

IgG

### Purification

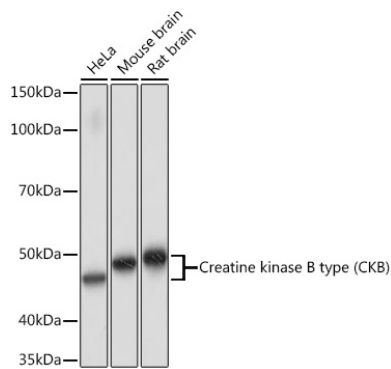
Affinity purification

### Storage

Store at -20°C. Avoid freeze / thaw cycles.

Buffer: PBS with 0.02% sodium azide,0.05% BSA,50% glycerol,pH7.3.

## Validation Data



Western blot analysis of extracts of various cell lines, using Creatine kinase B type (CKB) Rabbit mAb (A4907) at 1:1000 dilution.

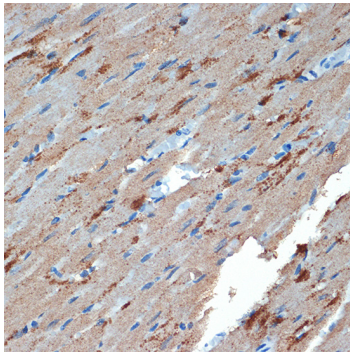
Secondary antibody: HRP Goat Anti-Rabbit IgG (H+L) (AS014) at 1:10000 dilution.

Lysates/proteins: 25µg per lane.

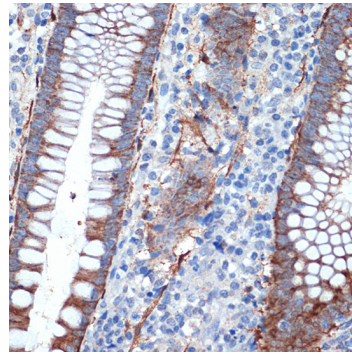
Blocking buffer: 3% nonfat dry milk in TBST.

Detection: ECL Basic Kit (RM00020).

Exposure time: 90s.



Immunohistochemistry analysis of paraffin-embedded rat heart using Creatine kinase B type (CKB) Rabbit mAb (A4907) at dilution of 1:100 (40x lens). Perform microwave antigen retrieval with 10 mM Tris/EDTA buffer pH 9.0 before commencing with IHC staining protocol.



Immunohistochemistry analysis of paraffin-embedded human appendix using Creatine kinase B type (CKB) Rabbit mAb (A4907) at dilution of 1:100 (40x lens). Perform microwave antigen retrieval with 10 mM Tris/EDTA buffer pH 9.0 before commencing with IHC staining protocol.