

PCTP Rabbit pAb

Catalog No.: A4904

Basic Information

Observed MW

25kDa

Calculated MW

25kDa

Category

Primary antibody

Applications

WB

Cross-Reactivity

Human

Background

Enables phosphatidylcholine binding activity and phosphatidylcholine transporter activity. Involved in phospholipid transport. Predicted to be located in cytosol.

Recommended Dilutions

WB 1:500 - 1:1000

Immunogen Information

Gene ID

58488

Swiss Prot

Q9UKL6

Immunogen

A synthetic Peptide of human PCTP

Synonyms

PC-TP; STARD2; PCTP

Contact

 | www.abclonal.com

Product Information

Source

Rabbit

Isotype

IgG

Purification

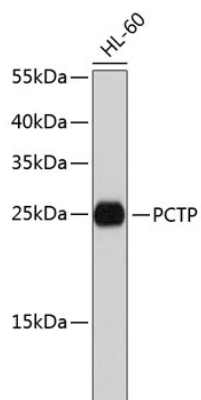
Affinity purification

Storage

Store at 4°C. Avoid freeze / thaw cycles.

Buffer: PBS with 0.02% sodium azide, pH 7.3.

Validation Data



Western blot analysis of extracts of HL-60 cells, using PCTP antibody (A4904).
Secondary antibody: HRP Goat Anti-Rabbit IgG (H+L) (AS014) at 1:10000 dilution.
Lysates/proteins: 25µg per lane.
Blocking buffer: 3% nonfat dry milk in TBST.