

A4899

Leader in Biomolecular Solutions for Life Science



alpha + beta Synuclein Rabbit mAb

Catalog No.: A4899 **Recombinant**

Basic Information

Observed MW

18kDa

Calculated MW

18kDa

Category

SMab Recombinant Monoclonal Antibody

Applications

WB,IF/ICC,ELISA

Cross-Reactivity

Human,Mouse,Rat

CloneNo number

ARC1181

Background

Alpha-synuclein is a member of the synuclein family, which also includes beta- and gamma-synuclein. Synucleins are abundantly expressed in the brain and alpha- and beta-synuclein inhibit phospholipase D2 selectively. SNCA may serve to integrate presynaptic signaling and membrane trafficking. Defects in SNCA have been implicated in the pathogenesis of Parkinson disease. SNCA peptides are a major component of amyloid plaques in the brains of patients with Alzheimer's disease. Alternatively spliced transcripts encoding different isoforms have been identified for this gene. [provided by RefSeq, Feb 2016]

Recommended Dilutions

WB	1:500 - 1:2000
IF/ICC	1:50 - 1:200

Immunogen Information

Gene ID
6622/6620

Swiss Prot
P37840/Q16143

Immunogen

A synthetic peptide corresponding to a sequence within amino acids 1-100 of human alpha + beta Synuclein (P37840).

Synonyms

NACP; PARK1; PARK4; PD1; alpha + beta Synuclein

Contact



www.abclonal.com

Product Information

Source
Rabbit

Isotype
IgG

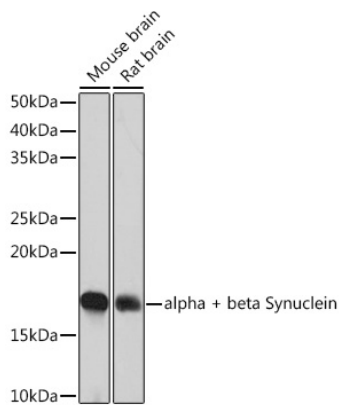
Purification
Affinity purification

Storage

Store at -20°C. Avoid freeze / thaw cycles.

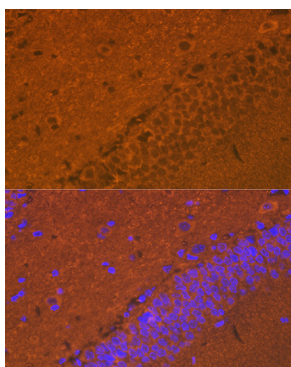
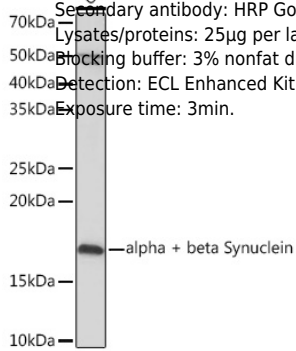
Buffer: PBS with 0.02% sodium azide,0.05% BSA,50% glycerol,pH7.3.

Validation Data



Western blot analysis of extracts of various cell lines, using alpha + beta Synuclein Rabbit mAb (A4899) at 1:1000 dilution.
Secondary antibody: HRP Goat Anti-Rabbit IgG (H+L) (AS014) at 1:10000 dilution.
Lysates/proteins: 25µg per lane.
Blocking buffer: 3% nonfat dry milk in TBST.
Detection: ECL Basic Kit (RM00020).
Exposure time: 1min.

Western blot analysis of extracts of U-87MG cells, using alpha + beta Synuclein Rabbit mAb (A4899) at 1:1000 dilution.
Secondary antibody: HRP Goat Anti-Rabbit IgG (H+L) (AS014) at 1:10000 dilution.
Lysates/proteins: 25µg per lane.
Blocking buffer: 3% nonfat dry milk in TBST.
Detection: ECL Enhanced Kit (RM00021).
Exposure time: 3min.



Immunofluorescence analysis of rat brain using alpha + beta Synuclein Rabbit mAb (A4899) at dilution of 1:100 (40x lens). Blue: DAPI for nuclear staining.