

RGMA Rabbit pAb

Catalog No.: A4878

Basic Information

Observed MW

49kDa

Calculated MW

49kDa

Category

Primary antibody

Applications

ELISA, WB

Cross-Reactivity

Human

Background

This gene encodes a member of the repulsive guidance molecule family. The encoded protein is a glycosylphosphatidylinositol-anchored glycoprotein that functions as an axon guidance protein in the developing and adult central nervous system. This protein may also function as a tumor suppressor in some cancers. Alternate splicing results in multiple transcript variants.

Recommended Dilutions

WB 1:500 - 1:2000

Immunogen Information

Gene ID

56963

Swiss Prot

Q96B86

Immunogen

Recombinant fusion protein containing a sequence corresponding to amino acids 101-450 of human RGMA (NP_064596.2).

Synonyms

RGM; RGMA

Contact

 | www.abclonal.com

Product Information

Source

Rabbit

Isotype

IgG

Purification

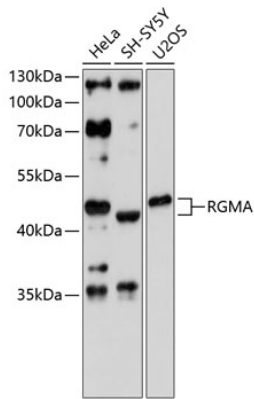
Affinity purification

Storage

Store at -20°C. Avoid freeze / thaw cycles.

Buffer: PBS with 0.01% thimerosal, 50% glycerol, pH7.3.

Validation Data



Western blot analysis of extracts of various cell lines, using RGMA antibody (A4878) at 1:3000 dilution.

Secondary antibody: HRP Goat Anti-Rabbit IgG (H+L) (AS014) at 1:10000 dilution.

Lysates/proteins: 25µg per lane.

Blocking buffer: 3% nonfat dry milk in TBST.

Detection: ECL Basic Kit (RM00020).

Exposure time: 90s.