

A4837

Leader in Biomolecular Solutions for Life Science



CDC37L1 Rabbit pAb

Catalog No.: A4837

Basic Information

Observed MW

39kDa

Calculated MW

39kDa

Category

Polyclonal Antibody

Applications

WB,ELISA

Cross-Reactivity

Human,Mouse

Background

CDC37L1 is a cytoplasmic phosphoprotein that exists in complex with HSP90 (HSPCA; MIM 140571) as well as several other proteins involved in HSP90-mediated protein folding (Scholz et al., 2001 [PubMed 11413142]).

Recommended Dilutions

WB 1:500 - 1:2000

Immunogen Information

Gene ID

55664

Swiss Prot

Q7L3B6

Immunogen

Recombinant fusion protein containing a sequence corresponding to amino acids 2-240 of human CDC37L1 (NP_060383.2).

Synonyms

HARC; CDC37B; CDC37L1

Contact



www.abclonal.com

Product Information

Source

Rabbit

Isotype

IgG

Purification

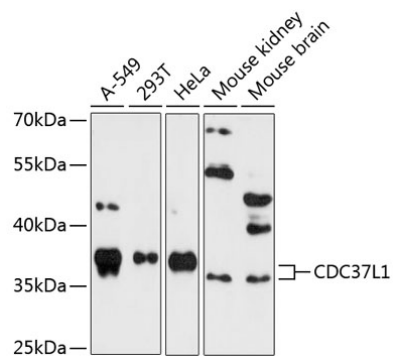
Affinity purification

Storage

Store at -20°C. Avoid freeze / thaw cycles.

Buffer: PBS with 0.01% thimerosal,50% glycerol,pH7.3.

Validation Data



Western blot analysis of various lysates using CDC37L1 Rabbit pAb (A4837) at 1:3000 dilution.
Secondary antibody: HRP Goat Anti-Rabbit IgG (H+L) (AS014) at 1:10000 dilution.
Lysates/proteins: 25µg per lane.
Blocking buffer: 3% nonfat dry milk in TBST.
Detection: ECL Enhanced Kit (RM00021).
Exposure time: 90s.