

# CRTAC1 Rabbit pAb

Catalog No.: A4812

## Basic Information

---

### Observed MW

78kDa

### Calculated MW

71kDa

### Category

Primary antibody

### Applications

WB

### Cross-Reactivity

Human

## Background

---

This gene encodes a glycosylated extracellular matrix protein that is found in the interterritorial matrix of articular deep zone cartilage. This protein is used as a marker to distinguish chondrocytes from osteoblasts and mesenchymal stem cells in culture. The presence of FG-GAP motifs and an RGD integrin-binding motif suggests that this protein may be involved in cell-cell or cell-matrix interactions. Copy number alterations in this gene have been observed in neurofibromatosis type 1-associated glomus tumors. Alternative splicing results in multiple transcript variants.

## Recommended Dilutions

---

WB 1:500 - 1:1000

## Immunogen Information

---

### Gene ID

55118

### Swiss Prot

Q9NQ79

### Immunogen

A synthetic Peptide of human CRTAC1

### Synonyms

ASPIC; CEP68; LOTUS; ASPIC1; CEP-68; CRTAC1

## Contact

---

 | [www.abclonal.com](http://www.abclonal.com)

## Product Information

---

### Source

Rabbit

### Isotype

IgG

### Purification

Affinity purification

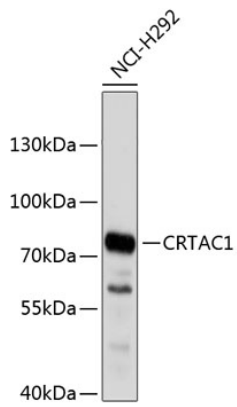
### Storage

Store at 4°C. Avoid freeze / thaw cycles.

Buffer: PBS with 0.02% sodium azide, pH7.3.

## Validation Data

---



Western blot analysis of extracts of NCI-H292 cells, using CRTAC1 antibody (A4812).  
Secondary antibody: HRP Goat Anti-Rabbit IgG (H+L) (AS014) at 1:10000 dilution.  
Lysates/proteins: 25 $\mu$ g per lane.  
Blocking buffer: 3% nonfat dry milk in TBST.