

β II-Tubulin/ β 2-Tubulin Rabbit mAb

Catalog No.: A4798 **Recombinant**

Basic Information

Observed MW

50kDa

Calculated MW

50kDa

Category

Primary antibody

Applications

ELISA, WB, IHC-P, IF/ICC

Cross-Reactivity

Human, Mouse, Rat

CloneNo number

ARC0227

Recommended Dilutions

| | |
|---------------|----------------|
| WB | 1:500 - 1:1000 |
| IHC-P | 1:50 - 1:200 |
| IF/ICC | 1:50 - 1:200 |

Contact

 | www.abclonal.com

Background

Microtubules, key participants in processes such as mitosis and intracellular transport, are composed of heterodimers of alpha- and beta-tubulins. The protein encoded by this gene is a beta-tubulin. Defects in this gene are associated with complex cortical dysplasia with other brain malformations-5. Two transcript variants encoding distinct isoforms have been found for this gene. [provided by RefSeq, Jul 2015]

Immunogen Information

Gene ID

7280/347733

Swiss Prot

Q13885/Q9BVA1

Immunogen

A synthetic peptide corresponding to a sequence within amino acids 346-445 of human β II-Tubulin/ β 2-Tubulin (Q13885).

Synonyms

CDCBM5; TUBB; TUBB2; β II-Tubulin/ β 2-Tubulin

Product Information

Source

Rabbit

Isotype

IgG

Purification

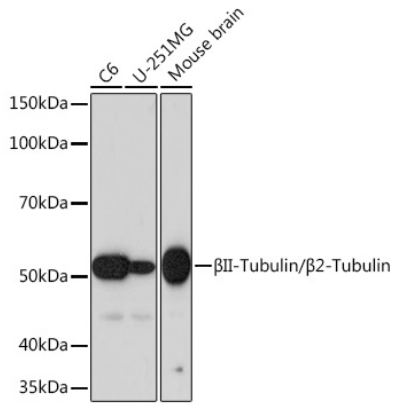
Affinity purification

Storage

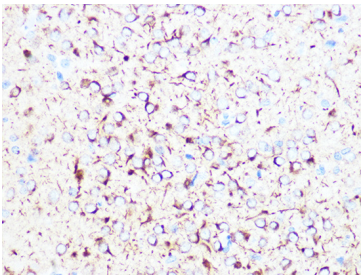
Store at -20°C. Avoid freeze / thaw cycles.

Buffer: PBS with 0.02% sodium azide, 0.05% BSA, 50% glycerol, pH7.3.

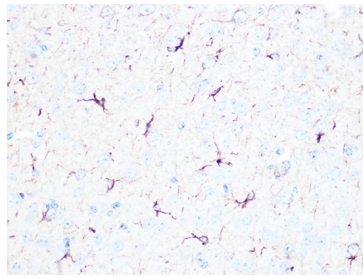
Validation Data



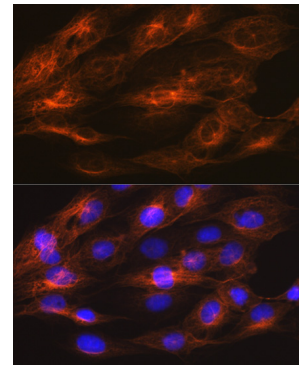
Western blot analysis of extracts of various cell lines, using β II-Tubulin/ β 2-Tubulin Rabbit mAb (A4798) at 1:1000 dilution.
Secondary antibody: HRP Goat Anti-Rabbit IgG (H+L) (AS014) at 1:10000 dilution.
Lysates/proteins: 25 μ g per lane.
Blocking buffer: 3% nonfat dry milk in TBST.
Detection: ECL Basic Kit (RM00020).
Exposure time: 60s.



Immunohistochemistry analysis of paraffin-embedded rat brain using β II-Tubulin/ β 2-Tubulin Rabbit mAb (A4798) at dilution of 1:100 (40x lens). Perform microwave antigen retrieval with 10 mM PBS buffer pH 7.2 before commencing with IHC staining protocol.



Immunohistochemistry analysis of paraffin-embedded mouse brain using β II-Tubulin/ β 2-Tubulin Rabbit mAb (A4798) at dilution of 1:100 (40x lens). Perform microwave antigen retrieval with 10 mM PBS buffer pH 7.2 before commencing with IHC staining protocol.



Immunofluorescence analysis of C6 cells using β II-Tubulin/ β 2-Tubulin Rabbit mAb (A4798) at dilution of 1:100 (40x lens). Blue: DAPI for nuclear staining.