

BTBD1 Rabbit pAb

Catalog No.: A4768

Basic Information

Observed MW

56kDa

Calculated MW

53kDa

Category

Primary antibody

Applications

WB,FC

Cross-Reactivity

Human, Mouse

Background

The C-terminus of the protein encoded by this gene binds topoisomerase I. The N-terminus contains a proline-rich region and a BTB/POZ domain (broad-complex, Tramtrack and bric a brac/Pox virus and Zinc finger), both of which are typically involved in protein-protein interactions. Subcellularly, the protein localizes to cytoplasmic bodies. Alternative splicing results in multiple transcript variants encoding different isoforms.

Recommended Dilutions

WB	1:500 - 1:1000
FC	1:20 - 1:50

Immunogen Information

Gene ID

53339

Swiss Prot

Q9H0C5

Immunogen

A synthetic Peptide of human BTBD1

Synonyms

C15orf1; NS5ATP8; BTBD1

Contact

 | www.abclonal.com

Product Information

Source

Rabbit

Isotype

IgG

Purification

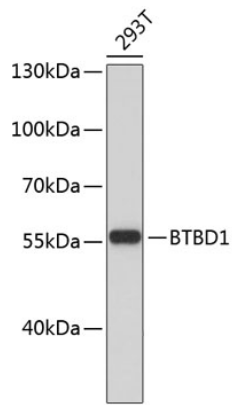
Affinity purification

Storage

Store at 4°C. Avoid freeze / thaw cycles.

Buffer: PBS with 0.02% sodium azide,pH7.3.

Validation Data



Western blot analysis of extracts of 293T cells, using BTBD1 antibody (A4768).
Secondary antibody: HRP Goat Anti-Rabbit IgG (H+L) (A5014) at 1:10000 dilution.
Lysates/proteins: 25µg per lane.
Blocking buffer: 3% nonfat dry milk in TBST.