

# LSM7 Rabbit pAb

Catalog No.: A4757

## Basic Information

---

### Observed MW

18kDa

### Calculated MW

12kDa

### Category

Primary antibody

### Applications

WB

### Cross-Reactivity

Human, Mouse

## Background

---

Sm-like proteins were identified in a variety of organisms based on sequence homology with the Sm protein family (see SNRPD2; MIM 601061). Sm-like proteins contain the Sm sequence motif, which consists of 2 regions separated by a linker of variable length that folds as a loop. The Sm-like proteins are thought to form a stable heteromer present in tri-snRNP particles, which are important for pre-mRNA splicing.

## Recommended Dilutions

---

WB 1:500 - 1:1000

## Immunogen Information

---

### Gene ID

51690

### Swiss Prot

Q9UK45

### Immunogen

A synthetic Peptide of human LSM7

### Synonyms

YNL147W; LSM7

## Contact

---

 | [www.abclonal.com](http://www.abclonal.com)

## Product Information

---

### Source

Rabbit

### Isotype

IgG

### Purification

Affinity purification

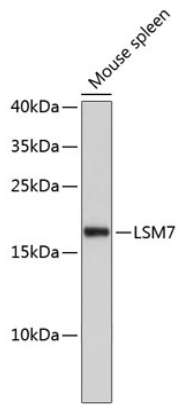
### Storage

Store at 4°C. Avoid freeze / thaw cycles.

Buffer: PBS with 0.02% sodium azide, pH7.3.

## Validation Data

---



Western blot analysis of extracts of mouse spleen, using LSM7 antibody (A4757).  
Secondary antibody: HRP Goat Anti-Rabbit IgG (H+L) (AS014) at 1:10000 dilution.  
Lysates/proteins: 25µg per lane.  
Blocking buffer: 3% nonfat dry milk in TBST.