

# TBX22 Rabbit pAb

Catalog No.: A4698

## Basic Information

### Observed MW

65kDa

### Calculated MW

58kDa

### Category

Primary antibody

### Applications

WB

### Cross-Reactivity

Human

## Background

This gene is a member of a phylogenetically conserved family of genes that share a common DNA-binding domain, the T-box. T-box genes encode transcription factors involved in the regulation of developmental processes. Mutations in this gene have been associated with the inherited X-linked disorder, Cleft palate with ankyloglossia, and it is believed to play a major role in human palatogenesis. Alternatively spliced transcript variants encoding different isoforms have been found for this gene.

## Recommended Dilutions

WB 1:500 - 1:1000

## Immunogen Information

### Gene ID

50945

### Swiss Prot

Q9Y458

### Immunogen

A synthetic Peptide of human TBX22

### Synonyms

CPX; CLPA; TBXX; ABERS; dj795G23.1; TBX22

## Contact

 | [www.abclonal.com](http://www.abclonal.com)

## Product Information

### Source

Rabbit

### Isotype

IgG

### Purification

Affinity purification

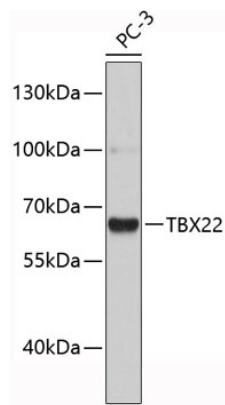
### Storage

Store at 4°C. Avoid freeze / thaw cycles.

Buffer: PBS with 0.02% sodium azide, pH7.3.

## Validation Data

---



Western blot analysis of extracts of PC-3 cells, using TBX22 antibody (A4698).  
Secondary antibody: HRP Goat Anti-Rabbit IgG (H+L) (A5014) at 1:10000 dilution.  
Lysates/proteins: 25µg per lane.  
Blocking buffer: 3% nonfat dry milk in TBST.