

# CRCP Rabbit pAb

Catalog No.: A4657

## Basic Information

### Observed MW

20kDa

### Calculated MW

17kDa

### Category

Primary antibody

### Applications

ELISA, WB, IHC-P

### Cross-Reactivity

Human, Mouse, Rat

## Background

This gene encodes a membrane protein that functions as part of a receptor complex for a small neuropeptide that increases intracellular cAMP levels. Alternate transcriptional splice variants, encoding different isoforms, have been characterized.

## Recommended Dilutions

<b>WB</b>	1:500 - 1:2000
<b>IHC-P</b>	1:50 - 1:200

## Immunogen Information

### Gene ID

27297

### Swiss Prot

O75575

### Immunogen

Recombinant fusion protein containing a sequence corresponding to amino acids 1-115 of human CRCP (NP\_001035737.1).

### Synonyms

C17; RCP; RCP9; RPC9; POLR3I; POLR3J; CGRPRCP; CGRP-RCP; CRCP

## Contact

 | [www.abclonal.com](http://www.abclonal.com)

## Product Information

### Source

Rabbit

### Isotype

IgG

### Purification

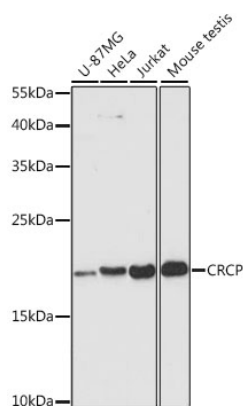
Affinity purification

### Storage

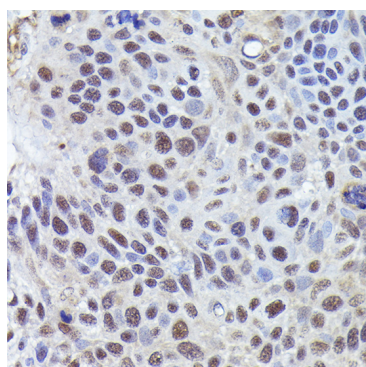
Store at -20°C. Avoid freeze / thaw cycles.

Buffer: PBS with 0.01% thimerosal, 50% glycerol, pH7.3.

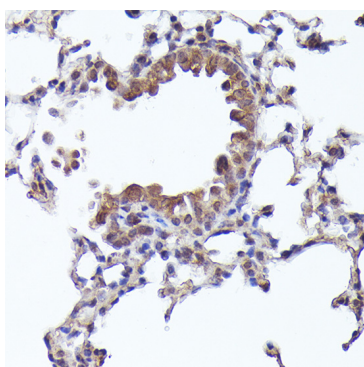
## Validation Data



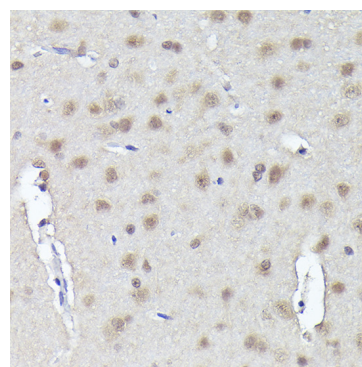
Western blot analysis of various lysates using CRCP Rabbit pAb (A4657) at 1:3000 dilution.  
 Secondary antibody: HRP Goat Anti-Rabbit IgG (H+L) (AS014) at 1:10000 dilution.  
 Lysates/proteins: 25µg per lane.  
 Blocking buffer: 3% nonfat dry milk in TBST.  
 Detection: ECL Enhanced Kit (RM00021).  
 Exposure time: 90s.



Immunohistochemistry analysis of CRCP in paraffin-embedded human esophageal cancer using CRCP Rabbit pAb (A4657) at dilution of 1:200 (40x lens). Perform high pressure antigen retrieval with 10 mM citrate buffer pH 6.0 before commencing with IHC staining protocol.



Immunohistochemistry analysis of CRCP in paraffin-embedded mouse lung using CRCP Rabbit pAb (A4657) at dilution of 1:200 (40x lens). Perform high pressure antigen retrieval with 10 mM citrate buffer pH 6.0 before commencing with IHC staining protocol.



Immunohistochemistry analysis of CRCP in paraffin-embedded rat brain using CRCP Rabbit pAb (A4657) at dilution of 1:200 (40x lens). Perform high pressure antigen retrieval with 10 mM citrate buffer pH 6.0 before commencing with IHC staining protocol.