

GPKOW Rabbit pAb

Catalog No.: A4652

Basic Information

Observed MW

52kDa

Calculated MW

52kDa

Category

Primary antibody

Applications

WB

Cross-Reactivity

Human

Background

This gene encodes a putative RNA-binding protein containing G-patch and KOW (Kyprides, Ouzounis, Woese) domains. The encoded protein interacts directly with protein kinase A and protein kinase X and is also found associated with the spliceosome.

Recommended Dilutions

WB 1:1000 - 1:2000

Immunogen Information

Gene ID

27238

Swiss Prot

Q92917

Immunogen

A synthetic peptide of human GPKOW

Synonyms

T54; Mos2; Spp2; GPATC5; GPATCH5; GPKOW

Contact

 | www.abclonal.com

Product Information

Source

Rabbit

Isotype

IgG

Purification

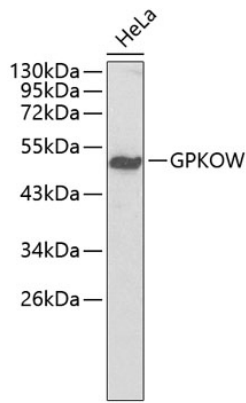
Affinity purification

Storage

Store at 4°C. Avoid freeze / thaw cycles.

Buffer: PBS with 0.02% sodium azide, pH7.3.

Validation Data



Western blot analysis of extracts of HeLa cells, using GPKOW antibody (A4652).
Secondary antibody: HRP Goat Anti-Rabbit IgG (H+L) (AS014) at 1:10000 dilution.
Lysates/proteins: 25µg per lane.
Blocking buffer: 3% nonfat dry milk in TBST.