

# KLHL3 Rabbit pAb

Catalog No.: A4618

## Basic Information

---

### Observed MW

65kDa

### Calculated MW

65kDa

### Category

Primary antibody

### Applications

WB

### Cross-Reactivity

Human

## Background

---

This gene is ubiquitously expressed and encodes a full-length protein which has an N-terminal BTB domain followed by a BACK domain and six kelch-like repeats in the C-terminus. These kelch-like repeats promote substrate ubiquitination of bound proteins via interaction of the BTB domain with the CUL3 (cullin 3) component of a cullin-RING E3 ubiquitin ligase (CRL) complex. Mutations in this gene cause pseudohypoaldosteronism type IID (PHA2D); a rare Mendelian syndrome featuring hypertension, hyperkalaemia and metabolic acidosis. Alternative splicing results in multiple transcript variants encoding distinct isoforms.

## Recommended Dilutions

---

WB 1:500 - 1:1000

## Immunogen Information

---

### Gene ID

26249

### Swiss Prot

Q9UH77

### Immunogen

A synthetic Peptide of human KLHL3

### Synonyms

PHA2D; KLHL3

## Contact

---

 | [www.abclonal.com](http://www.abclonal.com)

## Product Information

---

### Source

Rabbit

### Isotype

IgG

### Purification

Affinity purification

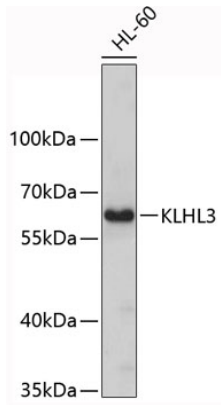
### Storage

Store at 4°C. Avoid freeze / thaw cycles.

Buffer: PBS with 0.02% sodium azide, pH7.3.

## Validation Data

---



Western blot analysis of extracts of HL-60 cells, using KLHL3 antibody (A4618).  
Secondary antibody: HRP Goat Anti-Rabbit IgG (H+L) (AS014) at 1:10000 dilution.  
Lysates/proteins: 25µg per lane.  
Blocking buffer: 3% nonfat dry milk in TBST.