

A4588

Leader in Biomolecular Solutions for Life Science



## BACE2 Rabbit pAb

Catalog No.: A4588

### Basic Information

---

**Observed MW**

56kDa

**Calculated MW**

56kDa

**Category**

Polyclonal Antibody

**Applications**

WB

**Cross-Reactivity**

Human

### Background

---

This gene encodes an integral membrane glycoprotein that functions as an aspartic protease. The encoded protein cleaves amyloid precursor protein into amyloid beta peptide, which is a critical step in the etiology of Alzheimer's disease and Down syndrome. The protein precursor is further processed into an active mature peptide. Alternative splicing results in multiple transcript variants.

### Recommended Dilutions

---

WB 1:500 - 1:1000

### Immunogen Information

---

**Gene ID**

25825

**Swiss Prot**

Q9Y5Z0

**Immunogen**

A synthetic Peptide of human BACE2

**Synonyms**

ASP1; BAE2; DRAP; AEPLC; ALP56; ASP21; CDA13; CEAP1; BACE2

### Contact

---



[www.abclonal.com](http://www.abclonal.com)

### Product Information

---

**Source**

Rabbit

**Isotype**

IgG

**Purification**

Affinity purification

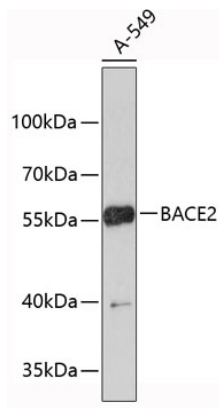
**Storage**

Store at 4°C. Avoid freeze / thaw cycles.

Buffer: PBS with 0.02% sodium azide, pH7.3.

## Validation Data

---



Western blot analysis of extracts of A-549 cells, using BACE2 antibody (A4588).  
Secondary antibody: HRP Goat Anti-Rabbit IgG (H+L) (AS014) at 1:10000 dilution.  
Lysates/proteins: 25µg per lane.  
Blocking buffer: 3% nonfat dry milk in TBST.