

SLC39A6 Rabbit pAb

Catalog No.: A4584

Basic Information

Observed MW

102kDa

Calculated MW

85kDa

Category

Primary antibody

Applications

ELISA, WB

Cross-Reactivity

Human, Mouse, Rat

Background

Zinc is an essential cofactor for hundreds of enzymes. It is involved in protein, nucleic acid, carbohydrate, and lipid metabolism, as well as in the control of gene transcription, growth, development, and differentiation. SLC39A6 belongs to a subfamily of proteins that show structural characteristics of zinc transporters (Taylor and Nicholson, 2003 [PubMed 12659941]).

Recommended Dilutions

WB 1:500 - 1:2000

Immunogen Information

Gene ID

25800

Swiss Prot

Q13433

Immunogen

Recombinant fusion protein containing a sequence corresponding to amino acids 170-320 of human SLC39A6 (NP_001092876.1).

Synonyms

LIV1; ZIP6; LIV-1; SLC39A6

Contact

 | www.abclonal.com

Product Information

Source

Rabbit

Isotype

IgG

Purification

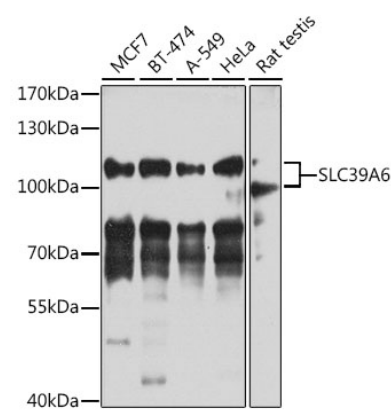
Affinity purification

Storage

Store at -20°C. Avoid freeze / thaw cycles.

Buffer: PBS with 0.02% sodium azide, 50% glycerol, pH7.3.

Validation Data



Western blot analysis of extracts of various cell lines, using SLC39A6 antibody (A4584) at 1:1000 dilution.
Secondary antibody: HRP Goat Anti-Rabbit IgG (H+L) (A5014) at 1:10000 dilution.
Lysates/proteins: 25µg per lane.
Blocking buffer: 3% nonfat dry milk in TBST.
Detection: ECL Basic Kit (RM00020).
Exposure time: 60s.