

# EML2 Rabbit pAb

Catalog No.: A4581

## Basic Information

---

### Observed MW

71kDa

### Calculated MW

71kDa

### Category

Primary antibody

### Applications

ELISA, WB

### Cross-Reactivity

Human, Mouse

## Background

---

Enables microtubule binding activity. Involved in negative regulation of microtubule polymerization and regulation of microtubule nucleation. Colocalizes with mitotic spindle.

## Recommended Dilutions

---

WB 1:500 - 1:2000

## Immunogen Information

---

### Gene ID

24139

### Swiss Prot

O95834

### Immunogen

Recombinant fusion protein containing a sequence corresponding to amino acids 150-415 of human EML2 (NP\_036287.1).

### Synonyms

ELP70; EMAP2; EMAP-2; EML2

## Contact

---

 | [www.abclonal.com](http://www.abclonal.com)

## Product Information

---

### Source

Rabbit

### Isotype

IgG

### Purification

Affinity purification

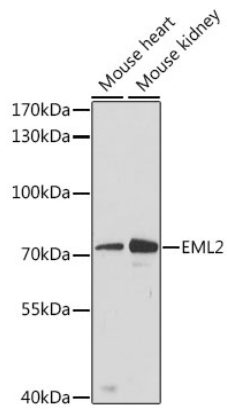
### Storage

Store at -20°C. Avoid freeze / thaw cycles.

Buffer: PBS with 0.01% thimerosal, 50% glycerol, pH7.3.

## Validation Data

---



Western blot analysis of various lysates using EML2 Rabbit pAb (A4581) at 1:3000 dilution.  
Secondary antibody: HRP Goat Anti-Rabbit IgG (H+L) (AS014) at 1:10000 dilution.  
Lysates/proteins: 25 $\mu$ g per lane.  
Blocking buffer: 3% nonfat dry milk in TBST.  
Detection: ECL Basic Kit (RM00020).  
Exposure time: 90s.