

# PISD Rabbit pAb

Catalog No.: A4580

## Basic Information

### Observed MW

50kDa

### Calculated MW

47kDa

### Category

Primary antibody

### Applications

ELISA, WB

### Cross-Reactivity

Human, Mouse

## Background

The protein encoded by this gene catalyzes the conversion of phosphatidylserine to phosphatidylethanolamine in the inner mitochondrial membrane. The encoded protein is active in phospholipid metabolism and interorganelle trafficking of phosphatidylserine.

## Recommended Dilutions

WB 1:500 - 1:2000

## Immunogen Information

### Gene ID

23761

### Swiss Prot

Q9UG56

### Immunogen

Recombinant fusion protein containing a sequence corresponding to amino acids 1-375 of human PISD (NP\_055153.1).

### Synonyms

PSD; LIBF; PSDC; PSSC; DJ858B16; dj858B16.2; PISD

## Contact

 | [www.abclonal.com](http://www.abclonal.com)

## Product Information

### Source

Rabbit

### Isotype

IgG

### Purification

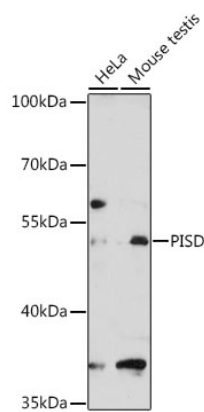
Affinity purification

### Storage

Store at -20°C. Avoid freeze / thaw cycles.

Buffer: PBS with 0.01% thimerosal, 50% glycerol, pH7.3.

# Validation Data



Western blot analysis of various lysates using PISD Rabbit pAb (A4580) at 1:3000 dilution.  
Secondary antibody: HRP Goat Anti-Rabbit IgG (H+L) (A5014) at 1:10000 dilution.  
Lysates/proteins: 25µg per lane.  
Blocking buffer: 3% nonfat dry milk in TBST.  
Detection: ECL Basic Kit (RM00020).  
Exposure time: 90s.