

RRS1 Rabbit pAb

Catalog No.: A4536

Basic Information

Observed MW

50kDa

Calculated MW

41kDa

Category

Primary antibody

Applications

WB,FC

Cross-Reactivity

Human

Background

Enables 5S rRNA binding activity. Involved in several processes, including mitotic metaphase plate congression; protein localization to nucleolus; and ribosomal large subunit assembly. Located in condensed nuclear chromosome; nucleolus; and nucleoplasm.

Recommended Dilutions

WB	1:500 - 1:1000
FC	1:20 - 1:50

Immunogen Information

Gene ID	Swiss Prot
23212	Q15050

Immunogen

A synthetic Peptide of human RRS1

Synonyms

RRS1

Contact

 | www.abclonal.com

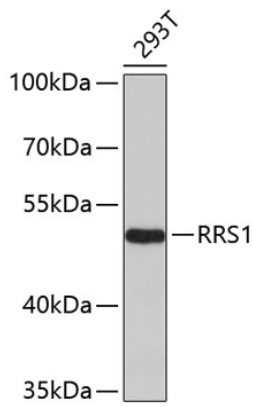
Product Information

Source	Isotype	Purification
Rabbit	IgG	Affinity purification

Storage

Store at 4°C. Avoid freeze / thaw cycles.
Buffer: PBS with 0.02% sodium azide,pH7.3.

Validation Data



Western blot analysis of extracts of 293T cells, using RRS1 antibody (A4536).
Secondary antibody: HRP Goat Anti-Rabbit IgG (H+L) (AS014) at 1:10000 dilution.
Lysates/proteins: 25µg per lane.
Blocking buffer: 3% nonfat dry milk in TBST.