

# CLASP2 Rabbit pAb

Catalog No.: A4528

## Basic Information

### Observed MW

141kDa

### Calculated MW

141kDa

### Category

Primary antibody

### Applications

ELISA, WB

### Cross-Reactivity

Human, Mouse, Rat

## Background

Enables cytoskeletal protein binding activity; dystroglycan binding activity; and protein tyrosine kinase binding activity. Involved in several processes, including microtubule cytoskeleton organization; positive regulation of extracellular matrix organization; and regulation of supramolecular fiber organization. Located in several cellular components, including basal cortex; cortical microtubule plus-end; and ruffle membrane. Colocalizes with focal adhesion; kinetochore; and microtubule cytoskeleton.

## Recommended Dilutions

WB 1:500 - 1:2000

## Immunogen Information

### Gene ID

23122

### Swiss Prot

O75122

### Immunogen

Recombinant fusion protein containing a sequence corresponding to amino acids 220-400 of human CLASP2 (NP\_001193973.1).

### Synonyms

CLASP2

## Contact

 | [www.abclonal.com](http://www.abclonal.com)

## Product Information

### Source

Rabbit

### Isotype

IgG

### Purification

Affinity purification

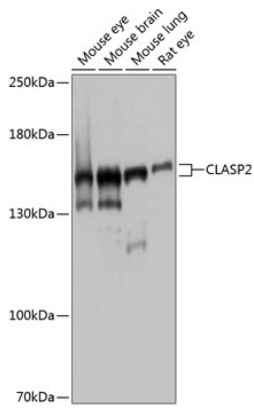
### Storage

Store at -20°C. Avoid freeze / thaw cycles.

Buffer: PBS with 0.02% sodium azide, 50% glycerol, pH 7.3.

## Validation Data

---



Western blot analysis of extracts of various cell lines, using CLASP2 antibody (A4528) at 1:1000 dilution.

Secondary antibody: HRP Goat Anti-Rabbit IgG (H+L) (AS014) at 1:10000 dilution.

Lysates/proteins: 25µg per lane.

Blocking buffer: 3% nonfat dry milk in TBST.

Detection: ECL Basic Kit (RM00020).

Exposure time: 30s.