

Casein Kinase 2 beta (CSNK2B) Rabbit mAb

Catalog No.: A4519 **Recombinant**

Basic Information

Observed MW

25kDa

Calculated MW

25kDa

Category

Primary antibody

Applications

ELISA, WB, IF/ICC

Cross-Reactivity

Human, Mouse, Rat

CloneNo number

ARC1069

Recommended Dilutions

WB	1:500 - 1:1000
IF/ICC	1:50 - 1:200

Background

This gene encodes the beta subunit of casein kinase II, a ubiquitous protein kinase which regulates metabolic pathways, signal transduction, transcription, translation, and replication. The enzyme is composed of three subunits, alpha, alpha prime and beta, which form a tetrameric holoenzyme. The alpha and alpha prime subunits are catalytic, while the beta subunit serves regulatory functions. The enzyme localizes to the endoplasmic reticulum and the Golgi apparatus. Two transcript variants encoding different isoforms have been found for this gene.

Immunogen Information

Gene ID	Swiss Prot
1460	P67870

Immunogen

Recombinant fusion protein containing a sequence corresponding to amino acids 101-215 of human Casein Kinase 2 beta (CSNK2B) (P67870).

Synonyms

G5A; CK2B; CK2N; Ckb1; Ckb2; CSK2B; POBINDS; Casein Kinase 2 beta (CSNK2B)

Contact

 | www.abclonal.com

Product Information

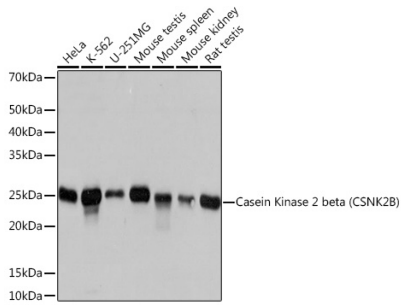
Source	Isotype	Purification
Rabbit	IgG	Affinity purification

Storage

Store at -20°C. Avoid freeze / thaw cycles.

Buffer: PBS with 0.02% sodium azide, 0.05% BSA, 50% glycerol, pH7.3.

Validation Data



Western blot analysis of various lysates using Casein Kinase 2 beta (CSNK2B) (CSNK2B) Rabbit mAb (A4519) at 1:1000 dilution.

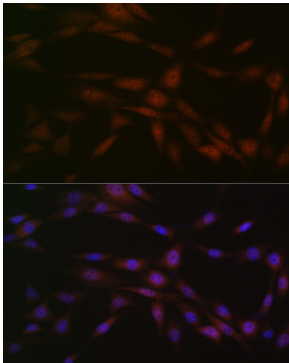
Secondary antibody: HRP Goat Anti-Rabbit IgG (H+L) (AS014) at 1:10000 dilution.

Lysates/proteins: 25µg per lane.

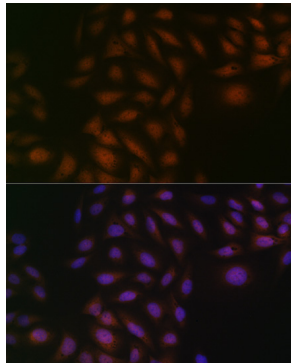
Blocking buffer: 3% nonfat dry milk in TBST.

Detection: ECL Basic Kit (RM00020).

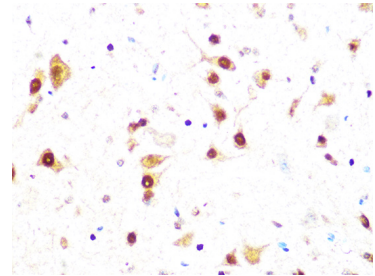
Exposure time: 3s.



Immunofluorescence analysis of NIH-3T3 cells using Casein Kinase 2 beta (CSNK2B) (CSNK2B) Rabbit mAb (A4519) at dilution of 1:100 (40x lens). Secondary antibody: Cy3 Goat Anti-Rabbit IgG (H+L) (AS007) at 1:500 dilution. Blue: DAPI for nuclear staining.



Immunofluorescence analysis of U-2 OS cells using Casein Kinase 2 beta (CSNK2B) (CSNK2B) Rabbit mAb (A4519) at dilution of 1:100 (40x lens). Secondary antibody: Cy3 Goat Anti-Rabbit IgG (H+L) (AS007) at 1:500 dilution. Blue: DAPI for nuclear staining.



Immunohistochemistry analysis of Casein Kinase 2 beta (CSNK2B) in paraffin-embedded mouse spinal cord using Casein Kinase 2 beta (CSNK2B) (CSNK2B) Rabbit mAb (A4519) at dilution of 1:100 (40x lens). Perform microwave antigen retrieval with 10 mM PBS buffer pH 7.2 before commencing with IHC staining protocol.