

A4510

Leader in Biomolecular Solutions for Life Science



## COPG1 Rabbit pAb

Catalog No.: A4510

### Basic Information

**Observed MW**

98kDa

**Calculated MW**

98kDa

**Category**

Mouse Monoclonal Antibody

**Applications**

WB

**Cross-Reactivity**

Human

### Background

Predicted to enable structural molecule activity. Predicted to be involved in several processes, including Golgi vesicle transport; establishment of Golgi localization; and organelle transport along microtubule. Located in Golgi apparatus.

### Recommended Dilutions

WB 1:500 - 1:1000

### Immunogen Information

**Gene ID**

22820

**Swiss Prot**

Q9Y678

**Immunogen**

A synthetic Peptide of human COPG1

**Synonyms**

COPG; COPG1

### Contact



[www.abclonal.com](http://www.abclonal.com)

### Product Information

**Source**

Rabbit

**Isotype**

IgG

**Purification**

Affinity purification

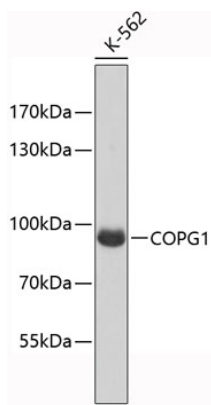
**Storage**

Store at 4°C. Avoid freeze / thaw cycles.

Buffer: PBS with 0.02% sodium azide, pH7.3.

## Validation Data

---



Western blot analysis of extracts of K-562 cells, using COPG1 antibody (A4510).  
Secondary antibody: HRP Goat Anti-Rabbit IgG (H+L) (A5014) at 1:10000 dilution.  
Lysates/proteins: 25µg per lane.  
Blocking buffer: 3% nonfat dry milk in TBST.