

A4500

Leader in Biomolecular Solutions for Life Science



# B4GALT7 Rabbit pAb

Catalog No.: A4500

## Basic Information

### Observed MW

37kDa

### Calculated MW

37kDa

### Category

Polyclonal Antibody

### Applications

WB

### Cross-Reactivity

Human, Mouse

## Background

This gene is a member of the beta-1,4-galactosyltransferase (beta4GalT) family. Family members encode type II membrane-bound glycoproteins that appear to have exclusive specificity for the donor substrate UDP-galactose. Each beta4GalT member has a distinct function in the biosynthesis of different glycoconjugates and saccharide structures. As type II membrane proteins, they have an N-terminal hydrophobic signal sequence that directs the protein to the Golgi apparatus which then remains uncleaved to function as a transmembrane anchor. The enzyme encoded by this gene attaches the first galactose in the common carbohydrate-protein linkage (GlcA-beta1,3-Gal-beta1,3-Gal-beta1,4-Xyl-beta1-O-Ser) found in proteoglycans. This enzyme differs from other beta4GalTs because it lacks the conserved Cys residues found in beta4GalT1-beta4GalT6 and it is located in cis-Golgi instead of trans-Golgi. Mutations in this gene have been associated with the progeroid form of Ehlers-Danlos syndrome.

## Recommended Dilutions

WB 1:500 - 1:1000

## Immunogen Information

### Gene ID

11285

### Swiss Prot

Q9UBV7

### Immunogen

A synthetic Peptide of human B4GALT7

### Synonyms

XGPT; EDSP1; XGPT1; EDSSLA; XGALT1; EDSSPD1; B4GALT7

## Contact



[www.abclonal.com](http://www.abclonal.com)

## Product Information

### Source

Rabbit

### Isotype

IgG

### Purification

Affinity purification

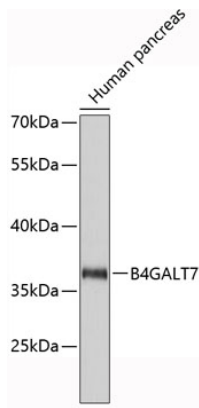
### Storage

Store at 4°C. Avoid freeze / thaw cycles.

Buffer: PBS with 0.02% sodium azide, pH7.3.

## Validation Data

---



Western blot analysis of extracts of human pancreas, using B4GALT7 antibody (A4500).  
Secondary antibody: HRP Goat Anti-Rabbit IgG (H+L) (AS014) at 1:10000 dilution.  
Lysates/proteins: 25 $\mu$ g per lane.  
Blocking buffer: 3% nonfat dry milk in TBST.