

KLHL2 Rabbit pAb

Catalog No.: A4498

Basic Information

Observed MW

65kDa

Calculated MW

66kDa

Category

Primary antibody

Applications

WB

Cross-Reactivity

Human

Background

Enables actin binding activity and identical protein binding activity. Predicted to be involved in protein ubiquitination. Located in actin cytoskeleton.

Recommended Dilutions

WB 1:500 - 1:1000

Immunogen Information

Gene ID

11275

Swiss Prot

O95198

Immunogen

A synthetic Peptide of human KLHL2

Synonyms

MAV; MAYVEN; ABP-KELCH; KLHL2

Contact

 | www.abclonal.com

Product Information

Source

Rabbit

Isotype

IgG

Purification

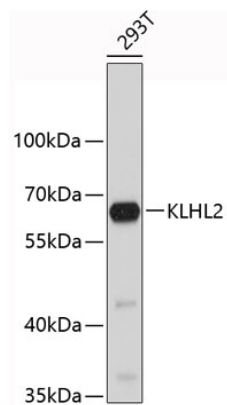
Affinity purification

Storage

Store at 4°C. Avoid freeze / thaw cycles.

Buffer: PBS with 0.02% sodium azide, pH 7.3.

Validation Data



Western blot analysis of extracts of 293T cells, using KLHL2 antibody (A4498).
Secondary antibody: HRP Goat Anti-Rabbit IgG (H+L) (A5014) at 1:10000 dilution.
Lysates/proteins: 25µg per lane.
Blocking buffer: 3% nonfat dry milk in TBST.