

EMILIN1 Rabbit pAb

Catalog No.: A4488

Basic Information

Observed MW

135kDa

Calculated MW

107kDa

Category

Primary antibody

Applications

ELISA, WB

Cross-Reactivity

Human

Background

This gene encodes an extracellular matrix glycoprotein that is characterized by an N-terminal microfibril interface domain, a coiled-coiled alpha-helical domain, a collagenous domain and a C-terminal globular C1q domain. The encoded protein associates with elastic fibers at the interface between elastin and microfibrils and may play a role in the development of elastic tissues including large blood vessels, dermis, heart and lung.

Recommended Dilutions

WB 1:200 - 1:2000

Immunogen Information

Gene ID

11117

Swiss Prot

Q9Y6C2

Immunogen

Recombinant fusion protein containing a sequence corresponding to amino acids 817-1016 of human EMILIN1 (NP_008977.1).

Synonyms

EMI; HMN10; gp115; EMILIN; EMILIN1

Contact

 | www.abclonal.com

Product Information

Source

Rabbit

Isotype

IgG

Purification

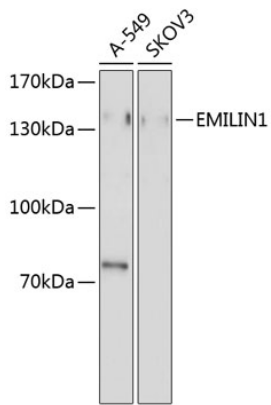
Affinity purification

Storage

Store at -20°C. Avoid freeze / thaw cycles.

Buffer: PBS with 0.02% sodium azide, 50% glycerol, pH7.3.

Validation Data



Western blot analysis of extracts of various cell lines, using EMILIN1 antibody (A4488).
Secondary antibody: HRP Goat Anti-Rabbit IgG (H+L) (AS014) at 1:10000 dilution.
Lysates/proteins: 25µg per lane.
Blocking buffer: 3% nonfat dry milk in TBST.
Detection: ECL Basic Kit (RM00020).