

A4487

Leader in Biomolecular Solutions for Life Science



KRR1 Rabbit pAb

Catalog No.: A4487

Basic Information

Observed MW

44kDa

Calculated MW

44kDa

Category

Mouse Monoclonal Antibody

Applications

WB,IF/ICC,ELISA

Cross-Reactivity

Human,Mouse,Rat

Background

Enables RNA binding activity. Predicted to be involved in rRNA processing. Located in chromosome; intercellular bridge; and nuclear lumen.

Recommended Dilutions

WB	1:500 - 1:2000
IF/ICC	1:50 - 1:200

Immunogen Information

Gene ID

11103

Swiss Prot

Q13601

Immunogen

Recombinant fusion protein containing a sequence corresponding to amino acids 1-381 of human KRR1 (NP_008974.5).

Synonyms

HRB2; RIP-1; KRR1

Contact



www.abclonal.com

Product Information

Source

Rabbit

Isotype

IgG

Purification

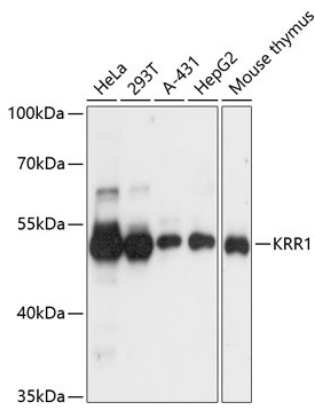
Affinity purification

Storage

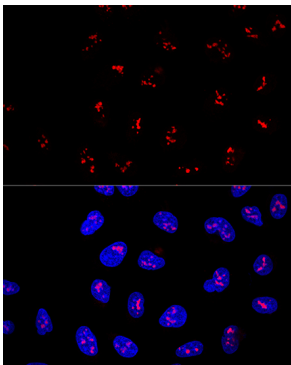
Store at -20°C. Avoid freeze / thaw cycles.

Buffer: PBS with 0.01% thimerosal,50% glycerol,pH7.3.

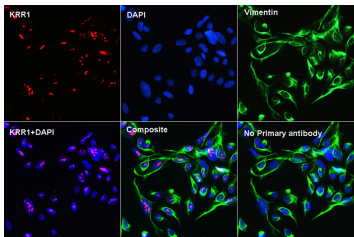
Validation Data



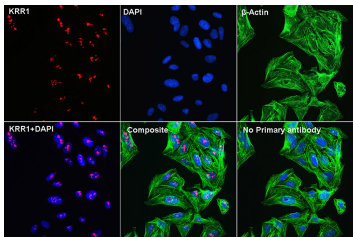
Western blot analysis of various lysates using KRR1 Rabbit pAb (A4487) at 1:3000 dilution.
Secondary antibody: HRP Goat Anti-Rabbit IgG (H+L) (A5014) at 1:10000 dilution.
Lysates/proteins: 25µg per lane.
Blocking buffer: 3% nonfat dry milk in TBST.
Detection: ECL Basic Kit (RM00020).
Exposure time: 1s.



Confocal immunofluorescence analysis of U2OS cells using KRR1 Rabbit pAb (A4487) at dilution of 1:100. Blue: DAPI for nuclear staining.



Confocal Immunofluorescent analysis of U2OS cells using KRR1 Rabbit pAb (A4487) at dilution of 1:100 (40x lens)(red). Vimentin (A19607: Vimentin Rabbit mAb) for Cytoskeleton staining(green), DAPI for nuclear staining(blue).



Confocal Immunofluorescent analysis of U2OS cells using KRR1 Rabbit pAb (A4487) at dilution of 1:100 (40x lens)(red). β-Actin (AC004: ACTB Mouse mAb) for Cytoskeleton staining(green), DAPI for nuclear staining(blue).