

A4477

Leader in Biomolecular Solutions for Life Science



# LILRA2 Rabbit pAb

Catalog No.: A4477

## Basic Information

---

### Observed MW

53kDa

### Calculated MW

53kDa

### Category

Polyclonal Antibody

### Applications

WB,ELISA

### Cross-Reactivity

Human

## Background

---

This gene encodes a member of a family of immunoreceptors that are expressed predominantly on monocytes and B cells, and at lower levels on dendritic cells and natural killer cells. The encoded protein is an activating receptor that inhibits dendritic cell differentiation and antigen presentation and suppresses innate immune response. Alternatively spliced transcript variants encoding different isoforms have been found. This gene is located in a cluster of related genes on chromosome 19 and there is a pseudogene for this gene on chromosome 3.

## Recommended Dilutions

---

WB 1:200 - 1:2000

## Immunogen Information

---

### Gene ID

11027

### Swiss Prot

Q8N149

### Immunogen

Recombinant fusion protein containing a sequence corresponding to amino acids 24-240 of human LILRA2 (NP\_006857.2).

### Synonyms

ILT1; LIR7; CD85H; LIR-7; LILRA2

## Contact

---



[www.abclonal.com](http://www.abclonal.com)

## Product Information

---

### Source

Rabbit

### Isotype

IgG

### Purification

Affinity purification

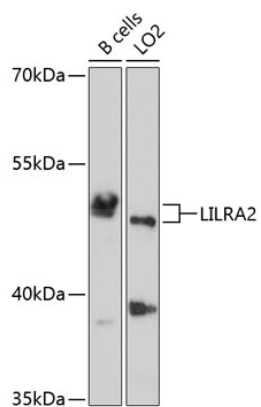
### Storage

Store at -20°C. Avoid freeze / thaw cycles.

Buffer: PBS with 0.02% sodium azide,50% glycerol,pH7.3.

## Validation Data

---



Western blot analysis of various lysates using LILRA2 Rabbit pAb (A4477) at 1:1000 dilution.  
Secondary antibody: HRP Goat Anti-Rabbit IgG (H+L) (AS014) at 1:10000 dilution.  
Lysates/proteins: 25µg per lane.  
Blocking buffer: 3% nonfat dry milk in TBST.  
Detection: ECL Basic Kit (RM00020).  
Exposure time: 30s.