

# SLC38A3 Rabbit pAb

Catalog No.: A4472 **1 Publications**

## Basic Information

### Observed MW

60kDa

### Calculated MW

56kDa

### Category

Primary antibody

### Applications

ELISA, WB

### Cross-Reactivity

Human, Mouse, Rat

## Background

Enables L-amino acid transmembrane transporter activity. Involved in amino acid transport. Located in plasma membrane.

## Recommended Dilutions

**WB** 1:500 - 1:2000

## Immunogen Information

### Gene ID

10991

### Swiss Prot

Q99624

### Immunogen

Recombinant fusion protein containing a sequence corresponding to amino acids 1-65 of human SLC38A3 (NP\_006832.1).

### Synonyms

G17; SN1; NAT1; SNAT3; DEE102; SLC38A3

## Contact

 | [www.abclonal.com](http://www.abclonal.com)

## Product Information

### Source

Rabbit

### Isotype

IgG

### Purification

Affinity purification

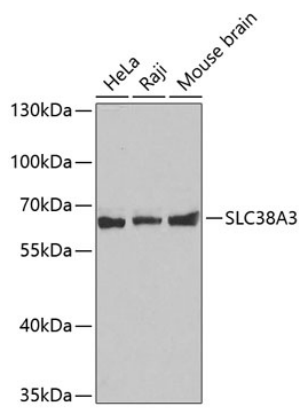
### Storage

Store at -20°C. Avoid freeze / thaw cycles.

Buffer: PBS with 0.01% thimerosal, 50% glycerol, pH7.3.

## Validation Data

---



Western blot analysis of various lysates using SLC38A3 Rabbit pAb (A4472).  
Secondary antibody: HRP Goat Anti-Rabbit IgG (H+L) (AS014) at 1:10000 dilution.  
Lysates/proteins: 25µg per lane.  
Blocking buffer: 3% nonfat dry milk in TBST.