

CKAP4 Rabbit pAb

Catalog No.: A4468

Basic Information

Observed MW

66kDa

Calculated MW

66kDa

Category

Primary antibody

Applications

WB, IHC-P

Cross-Reactivity

Human

Background

Enables RNA binding activity. Located in several cellular components, including lipid droplet; nuclear speck; and rough endoplasmic reticulum.

Recommended Dilutions

WB	1:1000 - 1:2000
IHC-P	1:50 - 1:100

Immunogen Information

Gene ID	Swiss Prot
10970	Q07065

Immunogen

A synthetic peptide of human CKAP4

Synonyms

p63; CLIMP63; CLIMP-63; ERGIC-63; CKAP4

Contact

 | www.abclonal.com

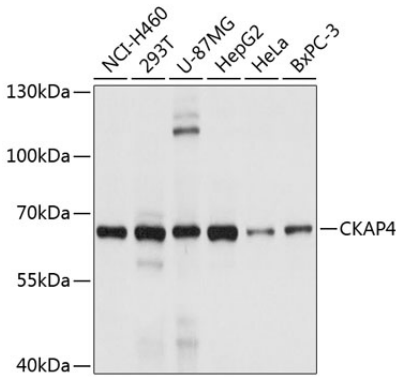
Product Information

Source	Isotype	Purification
Rabbit	IgG	Affinity purification

Storage

Store at 4°C. Avoid freeze / thaw cycles.
Buffer: PBS with 0.02% sodium azide, pH 7.3.

Validation Data



Western blot analysis of various lysates using CKAP4 Rabbit pAb (A4468) at 1:1000 dilution.
Secondary antibody: HRP Goat Anti-Rabbit IgG (H+L) (A5014) at 1:10000 dilution.
Lysates/proteins: 25µg per lane.
Blocking buffer: 3% nonfat dry milk in TBST.
Detection: ECL Basic Kit (RM00020).
Exposure time: 5s.