

A4459

Leader in Biomolecular Solutions for Life Science



RAB10 Rabbit pAb

Catalog No.: A4459 **1 Publications**

Basic Information

Observed MW

23kDa

Calculated MW

23kDa

Category

Polyclonal Antibody

Applications

WB,ELISA

Cross-Reactivity

Mouse

Background

RAB10 belongs to the RAS (see HRAS; MIM 190020) superfamily of small GTPases. RAB proteins localize to exocytic and endocytic compartments and regulate intracellular vesicle trafficking (Bao et al., 1998 [PubMed 9918381]).

Recommended Dilutions

WB 1:500 - 1:2000

Immunogen Information

Gene ID

10890

Swiss Prot

P61026

Immunogen

Recombinant fusion protein containing a sequence corresponding to amino acids 98-198 of human RAB10 (NP_057215.3).

Synonyms

RAB10

Contact



www.abclonal.com

Product Information

Source

Rabbit

Isotype

IgG

Purification

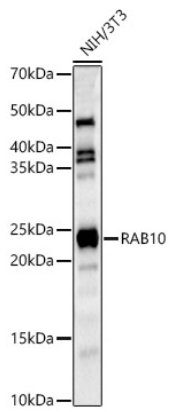
Affinity purification

Storage

Store at -20°C. Avoid freeze / thaw cycles.

Buffer: PBS with 0.02% sodium azide,50% glycerol,pH7.3.

Validation Data



Western blot analysis of NIH/3T3, using RAB10 Rabbit pAb (A4459) at 1:1000 dilution.
Secondary antibody: HRP Goat Anti-Rabbit IgG (H+L) (AS014) at 1:10000 dilution.
Lysates/proteins: 25 μ g per lane.
Blocking buffer: 3% nonfat dry milk in TBST.
Detection: ECL Basic Kit (RM00020).
Exposure time: 30s.