

CPLX2 Rabbit pAb

Catalog No.: A4456

Basic Information

Observed MW

18kDa

Calculated MW

15kDa

Category

Primary antibody

Applications

WB

Cross-Reactivity

Mouse

Background

Proteins encoded by the complexin/synaphin gene family are cytosolic proteins that function in synaptic vesicle exocytosis. These proteins bind syntaxin, part of the SNAP receptor. The protein product of this gene binds to the SNAP receptor complex and disrupts it, allowing transmitter release. Two transcript variants encoding the same protein have been found for this gene.

Recommended Dilutions

WB 1:500 - 1:1000

Immunogen Information

Gene ID

10814

Swiss Prot

Q6PUV4

Immunogen

A synthetic Peptide of human CPLX2

Synonyms

CPX2; Hfb1; 921-L; CPX-2; CPLX2

Contact

 | www.abclonal.com

Product Information

Source

Rabbit

Isotype

IgG

Purification

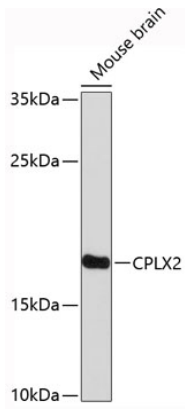
Affinity purification

Storage

Store at 4°C. Avoid freeze / thaw cycles.

Buffer: PBS with 0.02% sodium azide, pH7.3.

Validation Data



Western blot analysis of extracts of mouse brain, using CPLX2 antibody (A4456).
Secondary antibody: HRP Goat Anti-Rabbit IgG (H+L) (AS014) at 1:10000 dilution.
Lysates/proteins: 25 μ g per lane.
Blocking buffer: 3% nonfat dry milk in TBST.