

# IGF2BP3 Rabbit pAb

Catalog No.: A4444 **8 Publications**

## Basic Information

### Observed MW

70kDa

### Calculated MW

64kDa

### Category

Primary antibody

### Applications

ELISA, WB, IHC-P, IF/ICC, IP

### Cross-Reactivity

Human, Mouse

## Background

The protein encoded by this gene is primarily found in the nucleolus, where it can bind to the 5' UTR of the insulin-like growth factor II leader 3 mRNA and may repress translation of insulin-like growth factor II during late development. The encoded protein contains several KH domains, which are important in RNA binding and are known to be involved in RNA synthesis and metabolism. A pseudogene exists on chromosome 7, and there are putative pseudogenes on other chromosomes.

## Recommended Dilutions

<b>WB</b>	1:500 - 1:2000
<b>IHC-P</b>	1:50 - 1:200
<b>IF/ICC</b>	1:50 - 1:200
<b>IP</b>	0.5µg-4µg antibody for 200µg-400µg extracts of whole cells

## Immunogen Information

<b>Gene ID</b>	<b>Swiss Prot</b>
10643	O00425

### Immunogen

A synthetic peptide corresponding to a sequence within amino acids 300-579 of human IGF2BP3 (NP\_006538.2).

### Synonyms

KOC; CT98; IMP3; KOC1; IMP-3; VICKZ3; IGF2BP3

## Contact

 | [www.abclonal.com](http://www.abclonal.com)

## Product Information

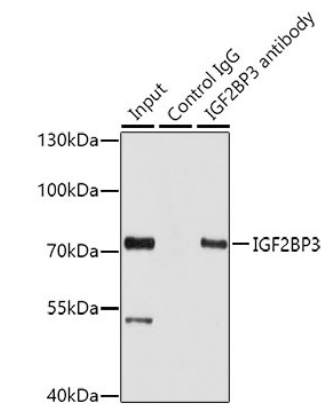
<b>Source</b>	<b>Isotype</b>	<b>Purification</b>
Rabbit	IgG	Affinity purification

### Storage

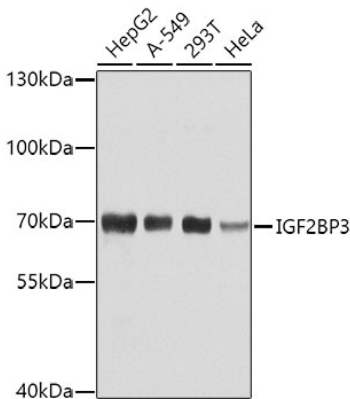
Store at -20°C. Avoid freeze / thaw cycles.

Buffer: PBS with 0.02% sodium azide, 50% glycerol, pH7.3.

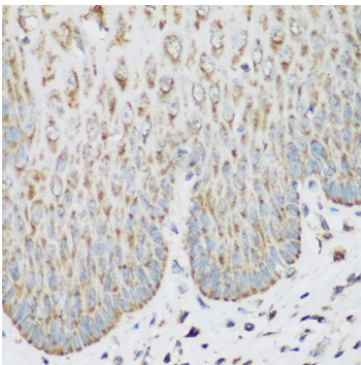
Validation Data



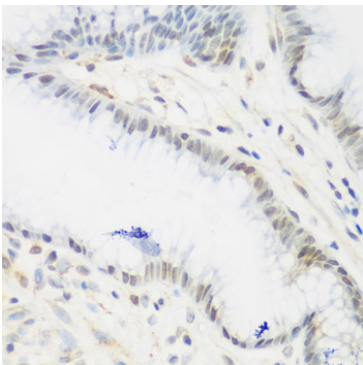
Immunoprecipitation analysis of 100 µg extracts of HepG2 cells using 3 µg IGF2BP3 antibody (A4444). Western blot was performed from the immunoprecipitate using IGF2BP3 antibody (A4444) at a dilution of 1:1000.



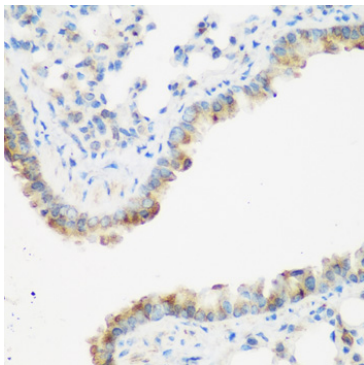
Western blot analysis of various lysates using IGF2BP3 Rabbit pAb (A4444) at 1:1000 dilution. Secondary antibody: HRP Goat Anti-Rabbit IgG (H+L) (AS014) at 1:10000 dilution. Lysates/proteins: 25µg per lane. Blocking buffer: 3% nonfat dry milk in TBST. Detection: ECL Basic Kit (RM00020). Exposure time: 15s.



Immunohistochemistry analysis of IGF2BP3 in paraffin-embedded human esophagus using IGF2BP3 Rabbit pAb (A4444) at dilution of 1:200 (40x lens).Perform microwave antigen retrieval with 10 mM PBS buffer pH 7.2 before commencing with IHC staining protocol.



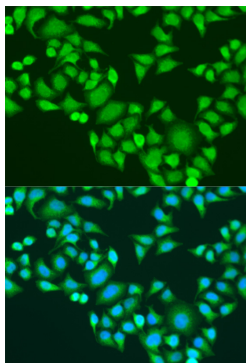
Immunohistochemistry analysis of IGF2BP3 in paraffin-embedded human stomach using IGF2BP3 Rabbit pAb (A4444) at dilution of 1:200 (40x lens).Perform microwave antigen retrieval with 10 mM PBS buffer pH 7.2 before commencing with IHC staining protocol.



Immunohistochemistry analysis of IGF2BP3 in paraffin-embedded mouse lung using IGF2BP3 Rabbit pAb (A4444) at dilution of 1:200 (40x lens).Perform microwave antigen retrieval with 10 mM PBS buffer pH 7.2 before commencing with IHC staining protocol.

## Validation Data

---



Immunofluorescence analysis of U2OS cells using IGF2BP3 Rabbit pAb (A4444) at dilution of 100 (40x lens). Secondary antibody: Cy3 Goat Anti-Rabbit IgG (H+L) (AS007) at 1:500 dilution. Blue: DAPI for nuclear staining.