

ANP32B Rabbit pAb

Catalog No.: A4432

Basic Information

Observed MW

24kDa

Calculated MW

29kDa

Category

Primary antibody

Applications

WB

Cross-Reactivity

Human

Background

Enables RNA polymerase binding activity and histone binding activity. Involved in several processes, including activation of cysteine-type endopeptidase activity involved in apoptotic process; nucleosome assembly; and positive regulation of protein export from nucleus. Located in cytoplasm and nucleoplasm. Colocalizes with nucleolus.

Recommended Dilutions

WB 1:500 - 1:1000

Immunogen Information

Gene ID

10541

Swiss Prot

Q92688

Immunogen

A synthetic Peptide of human ANP32B

Synonyms

APRIL; SSP29; PHAPI2; ANP32B

Contact

 | www.abclonal.com

Product Information

Source

Rabbit

Isotype

IgG

Purification

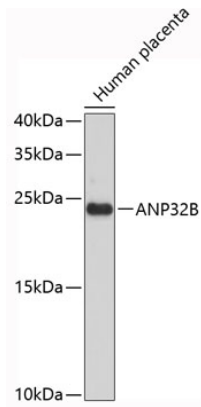
Affinity purification

Storage

Store at 4°C. Avoid freeze / thaw cycles.

Buffer: PBS with 0.02% sodium azide, pH7.3.

Validation Data



Western blot analysis of extracts of human placenta, using ANP32B antibody (A4432).
Secondary antibody: HRP Goat Anti-Rabbit IgG (H+L) (AS014) at 1:10000 dilution.
Lysates/proteins: 25 μ g per lane.
Blocking buffer: 3% nonfat dry milk in TBST.