

# MYBBP1A Rabbit pAb

Catalog No.: A4429 **1 Publications**

## Basic Information

**Observed MW**

149kDa

**Calculated MW**

149kDa

**Category**

Primary antibody

**Applications**

ELISA, WB, IHC-P, IF/ICC

**Cross-Reactivity**

Human, Mouse, Rat

## Background

This gene encodes a nucleolar transcriptional regulator that was first identified by its ability to bind specifically to the Myb proto-oncogene protein. The encoded protein is thought to play a role in many cellular processes including response to nucleolar stress, tumor suppression and synthesis of ribosomal DNA. Alternate splicing results in multiple transcript variants.

## Recommended Dilutions

<b>WB</b>	1:500 - 1:2000
<b>IHC-P</b>	1:50 - 1:200
<b>IF/ICC</b>	1:50 - 1:200

## Immunogen Information

**Gene ID**

10514

**Swiss Prot**

Q9BQG0

**Immunogen**

Recombinant fusion protein containing a sequence corresponding to amino acids 1104-1328 of human MYBBP1A (NP\_055335.2).

**Synonyms**

P160; PAP2; Pol5; MYBBP1A

## Contact

 | [www.abclonal.com](http://www.abclonal.com)

## Product Information

**Source**

Rabbit

**Isotype**

IgG

**Purification**

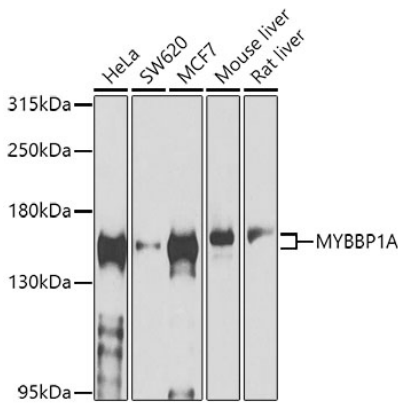
Affinity purification

**Storage**

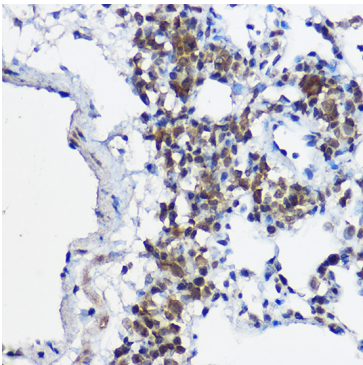
Store at -20°C. Avoid freeze / thaw cycles.

Buffer: PBS with 0.02% sodium azide, 50% glycerol, pH7.3.

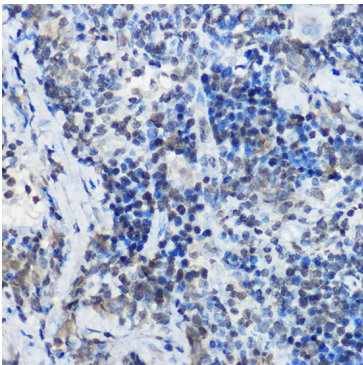
Validation Data



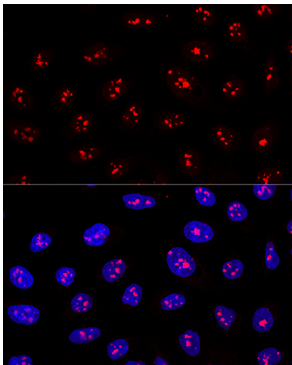
Western blot analysis of various lysates using MYBBP1A Rabbit pAb (A4429) at 1:1000 dilution.  
Secondary antibody: HRP Goat Anti-Rabbit IgG (H+L) (AS014) at 1:10000 dilution.  
Lysates/proteins: 25µg per lane.  
Blocking buffer: 3% nonfat dry milk in TBST.  
Detection: ECL Basic Kit (RM00020).  
Exposure time: 60s.



Immunohistochemistry analysis of MYBBP1A in paraffin-embedded rat lung using MYBBP1A Rabbit pAb (A4429) at dilution of 1:100 (40x lens).Perform high pressure antigen retrieval with 10 mM citrate buffer pH 6.0 before commencing with IHC staining protocol.



Immunohistochemistry analysis of MYBBP1A in paraffin-embedded rat spleen using MYBBP1A Rabbit pAb (A4429) at dilution of 1:100 (40x lens).Perform high pressure antigen retrieval with 10 mM citrate buffer pH 6.0 before commencing with IHC staining protocol.



Confocal immunofluorescence analysis of U2OS cells using MYBBP1A Rabbit pAb (A4429) at dilution of 1:200. Blue: DAPI for nuclear staining.