

CDC42EP2 Rabbit pAb

Catalog No.: A4420

Basic Information

Observed MW

25kDa

Calculated MW

22kDa

Category

Primary antibody

Applications

WB

Cross-Reactivity

Human, Mouse

Background

CDC42, a small Rho GTPase, regulates the formation of F-actin-containing structures through its interaction with the downstream effector proteins. The protein encoded by this gene is a member of the Borg family of CDC42 effector proteins. Borg family proteins contain a CRIB (Cdc42/Rac interactive-binding) domain. They bind to, and negatively regulate the function of CDC42. Coexpression of this protein with CDC42 suggested a role of this protein in actin filament assembly and cell shape control.

Recommended Dilutions

WB 1:500 - 1:1000

Immunogen Information

Gene ID

10435

Swiss Prot

O14613

Immunogen

A synthetic Peptide of human CDC42EP2

Synonyms

CEP2; BORG1; CDC42EP2

Contact

 | www.abclonal.com

Product Information

Source

Rabbit

Isotype

IgG

Purification

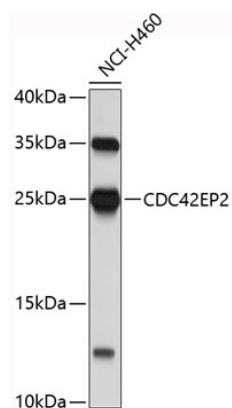
Affinity purification

Storage

Store at 4°C. Avoid freeze / thaw cycles.

Buffer: PBS with 0.02% sodium azide, pH7.3.

Validation Data



Western blot analysis of extracts of NCI-H460 cells, using CDC42EP2 antibody (A4420).
Secondary antibody: HRP Goat Anti-Rabbit IgG (H+L) (A5014) at 1:10000 dilution.
Lysates/proteins: 25µg per lane.
Blocking buffer: 3% nonfat dry milk in TBST.