

A4419

Leader in Biomolecular Solutions for Life Science



LYPLA1 Rabbit pAb

Catalog No.: A4419 **1 Publications**

Basic Information

Observed MW

25kDa

Calculated MW

25kDa

Category

Mouse Monoclonal Antibody

Applications

WB,IHC-P,ELISA

Cross-Reactivity

Human,Mouse

Background

This gene encodes a member of the alpha/beta hydrolase superfamily. The encoded protein functions as a homodimer, exhibiting both depalmitoylating as well as lysophospholipase activity, and may be involved in Ras localization and signaling. Alternate splicing results in multiple transcript variants. Pseudogenes of this gene have been defined on chromosomes 4, 6, and 7.

Recommended Dilutions

WB	1:500 - 1:2000
IHC-P	1:50 - 1:200

Immunogen Information

Gene ID	Swiss Prot
10434	075608

Immunogen

Recombinant fusion protein containing a sequence corresponding to amino acids 1-230 of human LYPLA1 (NP_006321.1).

Synonyms

APT1; LPL1; APT-1; LPL-I; hAPT1; LYPLA1

Contact



www.abclonal.com

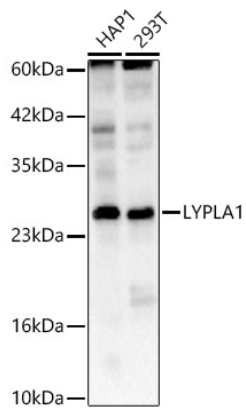
Product Information

Source	Isotype	Purification
Rabbit	IgG	Affinity purification

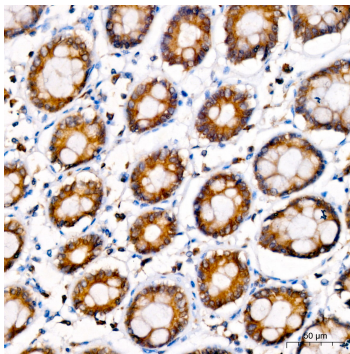
Storage

Store at -20°C. Avoid freeze / thaw cycles.
Buffer: PBS with 0.01% thimerosal,50% glycerol,pH7.3.

Validation Data



Western blot analysis of various lysates using LYPLA1 Rabbit pAb (A4419) at 1:1000 dilution.
Secondary antibody: HRP Goat Anti-Rabbit IgG (H+L) (AS014) at 1:10000 dilution.
Lysates / proteins: 25 µg per lane.
Blocking buffer: 3 % nonfat dry milk in TBST.
Detection: ECL Basic Kit (RM00020).
Exposure time: 90s.



Immunohistochemistry analysis of LYPLA1 in paraffin-embedded human colon tissue using LYPLA1 Rabbit pAb (A4419) at a dilution of 1:100 (40x lens). High pressure antigen retrieval was performed with 0.01 M citrate buffer (pH 6.0) prior to IHC staining.