

# RAB9P40 Rabbit pAb

Catalog No.: A4391

## Basic Information

---

### Observed MW

45kDa

### Calculated MW

41kDa

### Category

Primary antibody

### Applications

ELISA, WB

### Cross-Reactivity

Human

## Background

---

Predicted to be involved in receptor-mediated endocytosis and vesicle docking involved in exocytosis. Predicted to be located in cytoplasmic vesicle; cytosol; and trans-Golgi network membrane.

## Recommended Dilutions

---

**WB** 1:500 - 1:2000

## Immunogen Information

---

### Gene ID

10244

### Swiss Prot

Q7Z6M1

### Immunogen

Recombinant fusion protein containing a sequence corresponding to amino acids 1-240 of human RAB9P40 (NP\_005824.2).

### Synonyms

p40; RAB9P40; bA65N13.1

## Contact

---

 | [www.abclonal.com](http://www.abclonal.com)

## Product Information

---

### Source

Rabbit

### Isotype

IgG

### Purification

Affinity purification

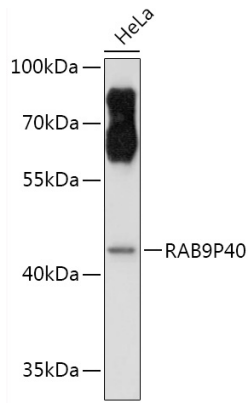
### Storage

Store at -20°C. Avoid freeze / thaw cycles.

Buffer: PBS with 0.01% thimerosal, 50% glycerol, pH7.3.

## Validation Data

---



Western blot analysis of extracts of HeLa cells, using RAB9P40 antibody (A4391) at 1:3000 dilution.  
Secondary antibody: HRP Goat Anti-Rabbit IgG (H+L) (AS014) at 1:10000 dilution.  
Lysates/proteins: 25µg per lane.  
Blocking buffer: 3% nonfat dry milk in TBST.  
Detection: ECL Basic Kit (RM00020).  
Exposure time: 90s.