

ATP6AP2 Rabbit pAb

Catalog No.: A4380

Basic Information

Observed MW

36kDa

Calculated MW

39kDa

Category

Primary antibody

Applications

WB

Cross-Reactivity

Human

Background

This gene encodes a protein that is associated with adenosine triphosphatases (ATPases). Proton-translocating ATPases have fundamental roles in energy conservation, secondary active transport, acidification of intracellular compartments, and cellular pH homeostasis. There are three classes of ATPases- F, P, and V. The vacuolar (V-type) ATPases have a transmembrane proton-conducting sector and an extramembrane catalytic sector. The encoded protein has been found associated with the transmembrane sector of the V-type ATPases.

Recommended Dilutions

WB 1:500 - 1:1000

Immunogen Information

Gene ID

10159

Swiss Prot

O75787

Immunogen

A synthetic Peptide of human ATP6AP2

Synonyms

PRR; M8-9; MRXE; RENR; XMRE; XPDS; CDG2R; HT028; MRXSH; ELDF10; ATP6IP2; MSTP009; APT6M8-9; ATP6M8-9; ATP6AP2

Contact

 | www.abclonal.com

Product Information

Source

Rabbit

Isotype

IgG

Purification

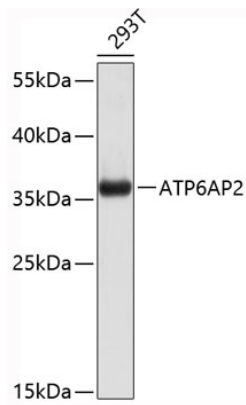
Affinity purification

Storage

Store at 4°C. Avoid freeze / thaw cycles.

Buffer: PBS with 0.02% sodium azide, pH7.3.

Validation Data



Western blot analysis of extracts of 293T cells, using ATP6AP2 antibody (A4380).
Secondary antibody: HRP Goat Anti-Rabbit IgG (H+L) (AS014) at 1:10000 dilution.
Lysates/proteins: 25µg per lane.
Blocking buffer: 3% nonfat dry milk in TBST.